

TA-Bravo 2

LEGEND

— Kinder Morgan Pipe Line

RESTRICTIONS

a. Unit training request will be individually evaluated for approval.

b. AFA 6 North and CALS 13 will be closed waiting further assesment and engineering controls.

48 49 50 51 52

01

01

37 00

37 00

99

99

36 98 000m N

48 000m E 49 50 51 52

36 98 000m N

48 000m E 49 50 51 52

303

307

CAC

IED Lanes

TSE

TSE

LFAM 710A

BRAVO ONE

H

BRAVO TWO

14

LandNav B2

RSOP 4

Raptor

HOLF

5

7

SULT 62

62 Gas

307

6

62 Tower

62

BRAVO THREE

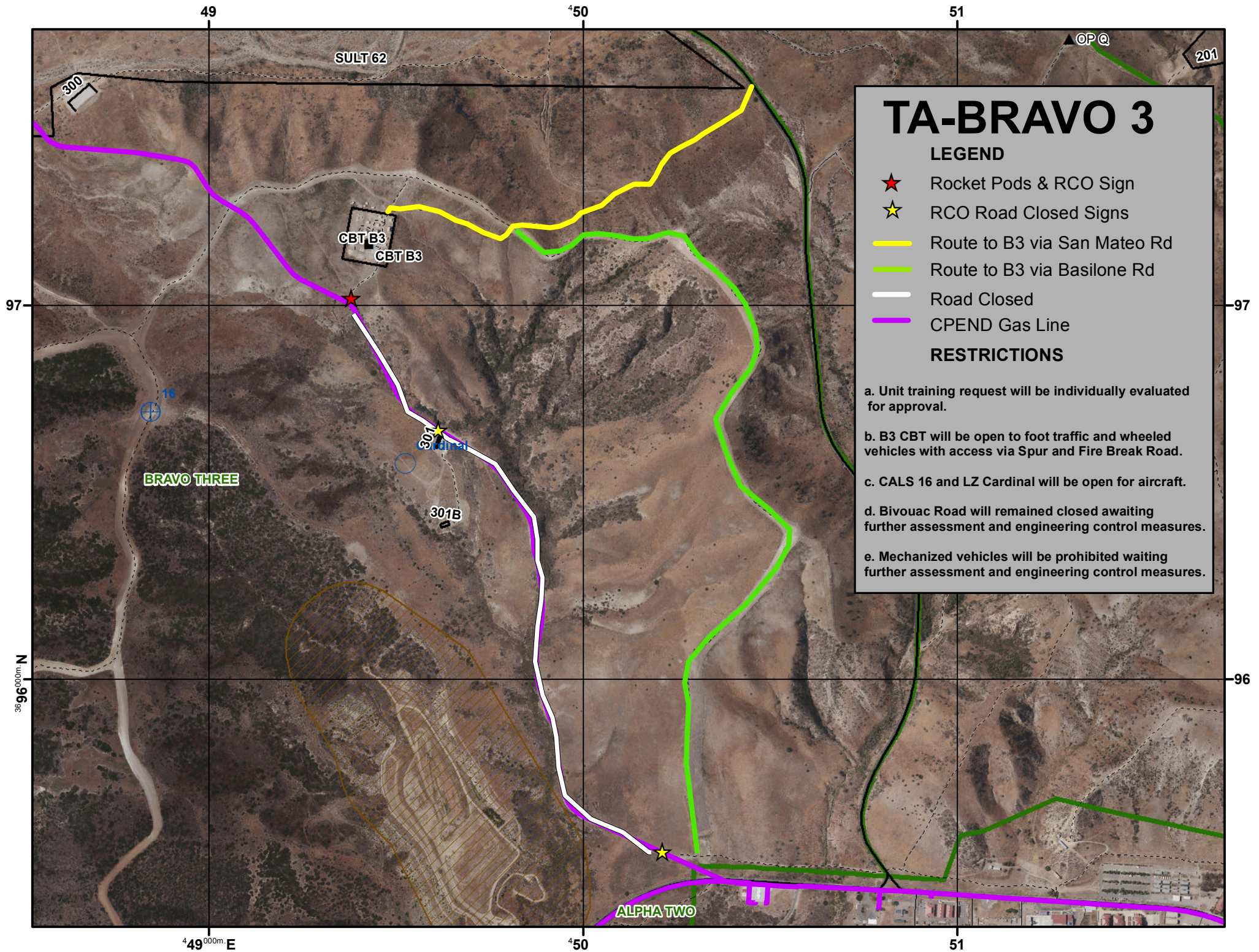
SULT 62

ALPHA ONE

314D

207

8



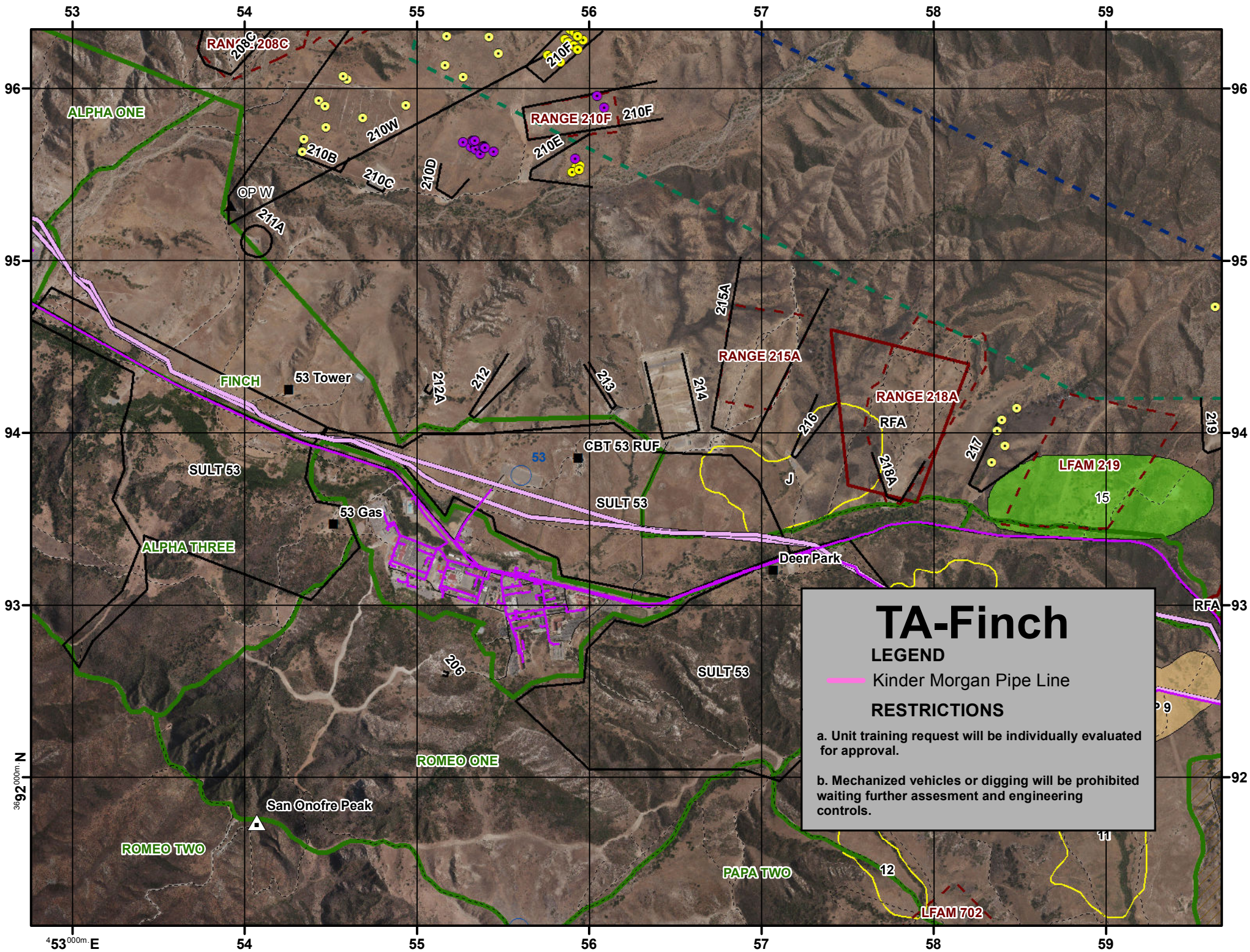
TA-BRAVO 3

LEGEND

- ★ Rocket Pods & RCO Sign
- ★ RCO Road Closed Signs
- Route to B3 via San Mateo Rd
- Route to B3 via Basilone Rd
- Road Closed
- CPEND Gas Line

RESTRICTIONS

- a. Unit training request will be individually evaluated for approval.
- b. B3 CBT will be open to foot traffic and wheeled vehicles with access via Spur and Fire Break Road.
- c. CALS 16 and LZ Cardinal will be open for aircraft.
- d. Bivouac Road will remained closed awaiting further assessment and engineering control measures.
- e. Mechanized vehicles will be prohibited waiting further assessment and engineering control measures.



53

54

55

56

57

58

59

96

96

95

95

94

94

93

93

92

92

36° 00'00" N

4° 53' 00" E

54

55

56

57

58

59

ALPHA ONE

RANGE 208C

RANGE 210F

OP W

211A

210B

210W

210C

210D

210E

210F

FINCH

53 Tower

212A

212

213

RANGE 215A

214

215A

RANGE 218A

RFA

216

J

217

SULT 53

CBT 53 RUF

SULT 53

53 Gas

Deer Park

LFAM 219

15

ALPHA THREE

206

SULT 53

RFA

ROMEO ONE

San Onofre Peak

ROMEO TWO

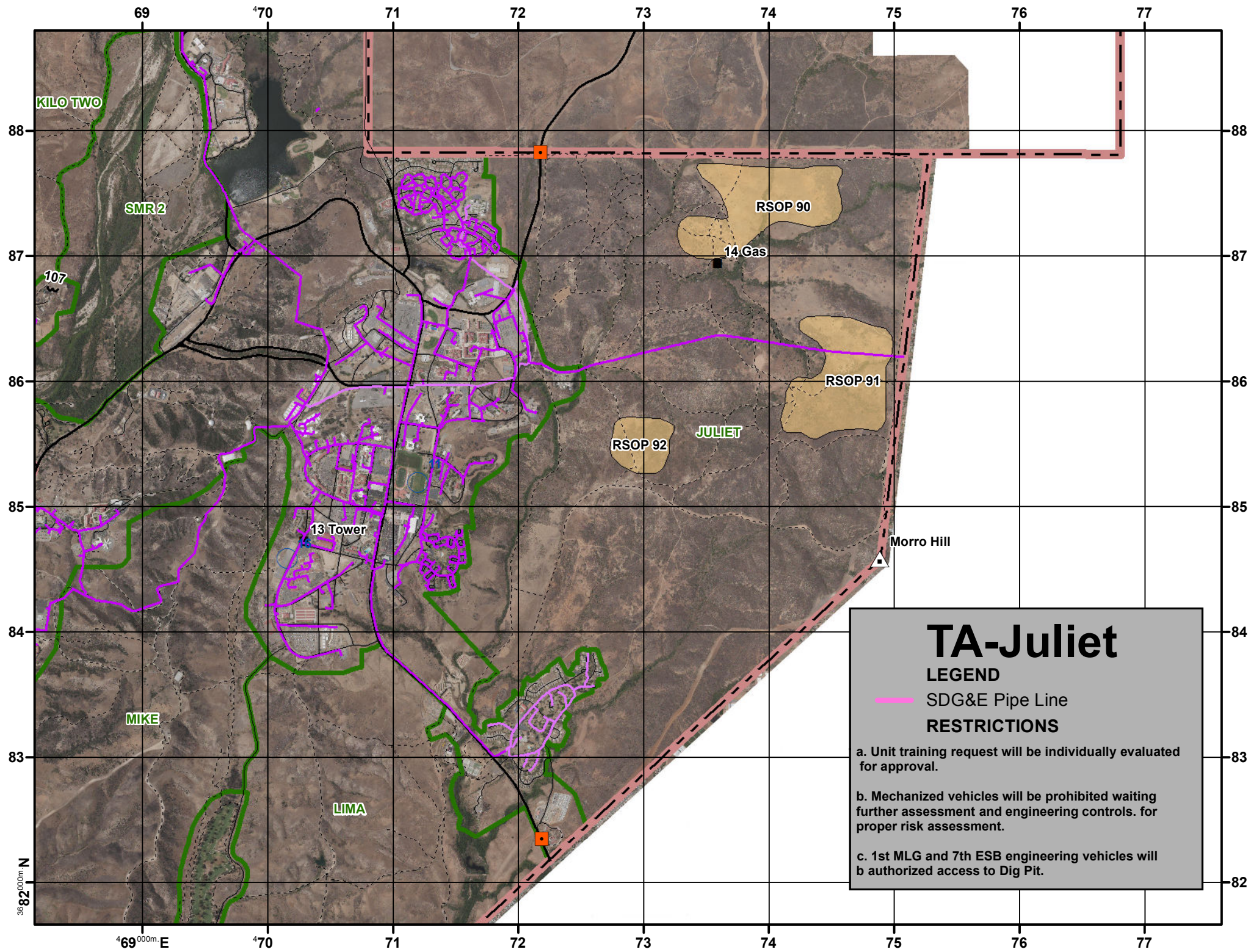
PAPA TWO

12

LFAM 702

11

9



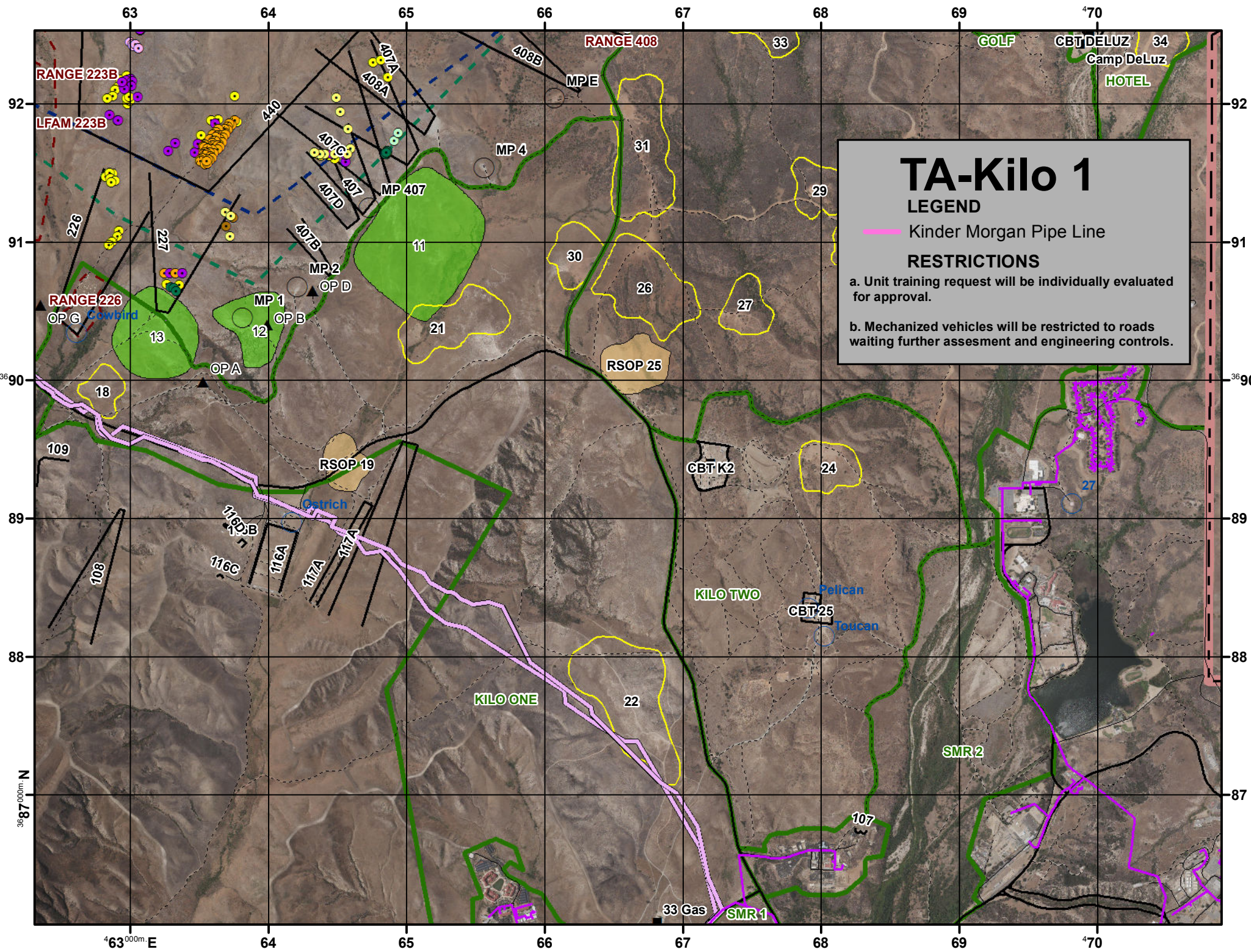
TA-Juliet

LEGEND

 SDG&E Pipe Line

RESTRICTIONS

- a. Unit training request will be individually evaluated for approval.
- b. Mechanized vehicles will be prohibited waiting further assessment and engineering controls. for proper risk assessment.
- c. 1st MLG and 7th ESB engineering vehicles will be authorized access to Dig Pit.



TA-Kilo 1

LEGEND

— Kinder Morgan Pipe Line

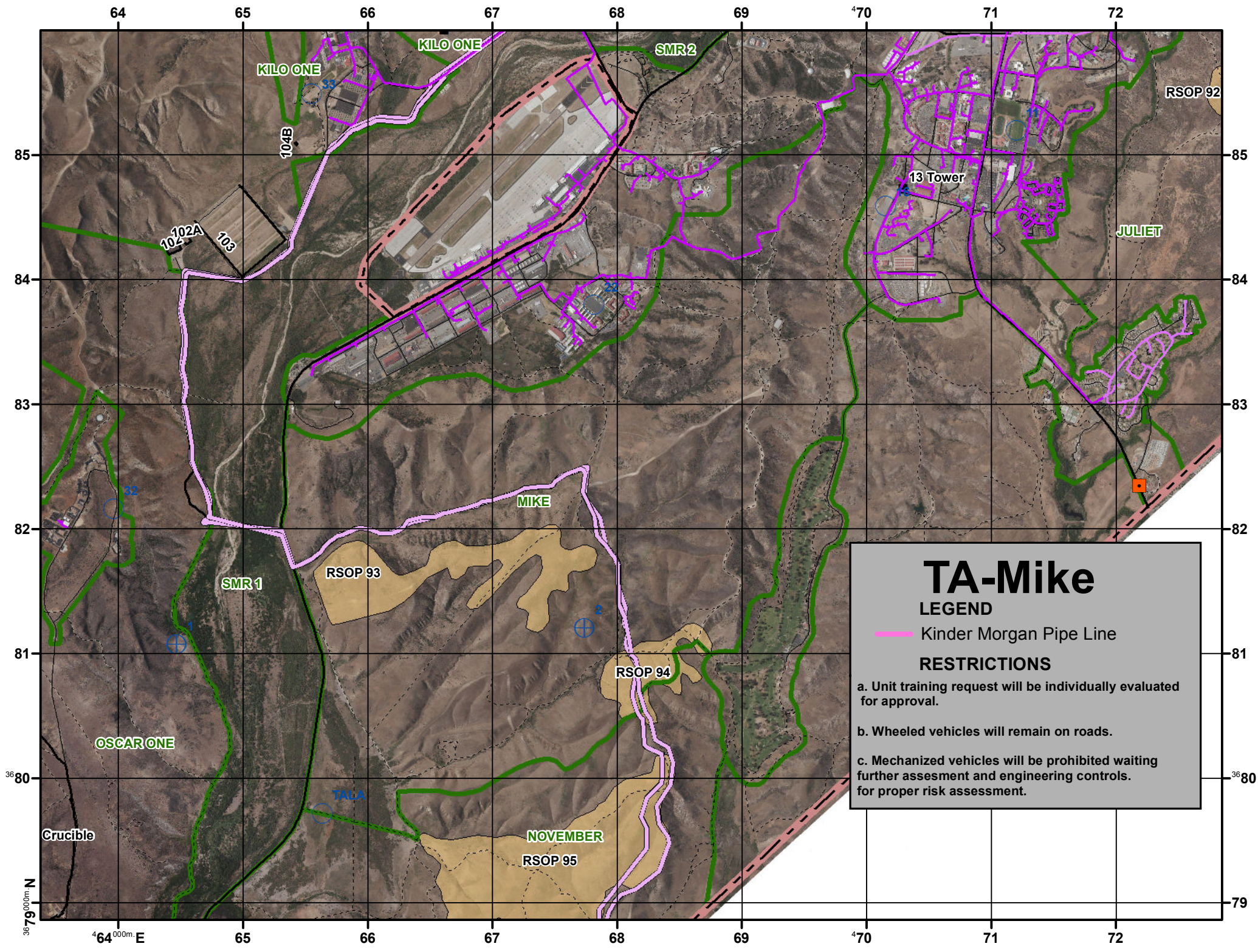
RESTRICTIONS

a. Unit training request will be individually evaluated for approval.

b. Mechanized vehicles will be restricted to roads waiting further assesment and engineering controls.

367000m N

463000m E



TA-Mike

LEGEND

— Kinder Morgan Pipe Line

RESTRICTIONS

- a. Unit training request will be individually evaluated for approval.
- b. Wheeled vehicles will remain on roads.
- c. Mechanized vehicles will be prohibited waiting further assesment and engineering controls. for proper risk assessment.

36°59'00.00m N

64°00'00m E

64 65 66 67 68 69 70 71 72

85 85 85

84 84 84

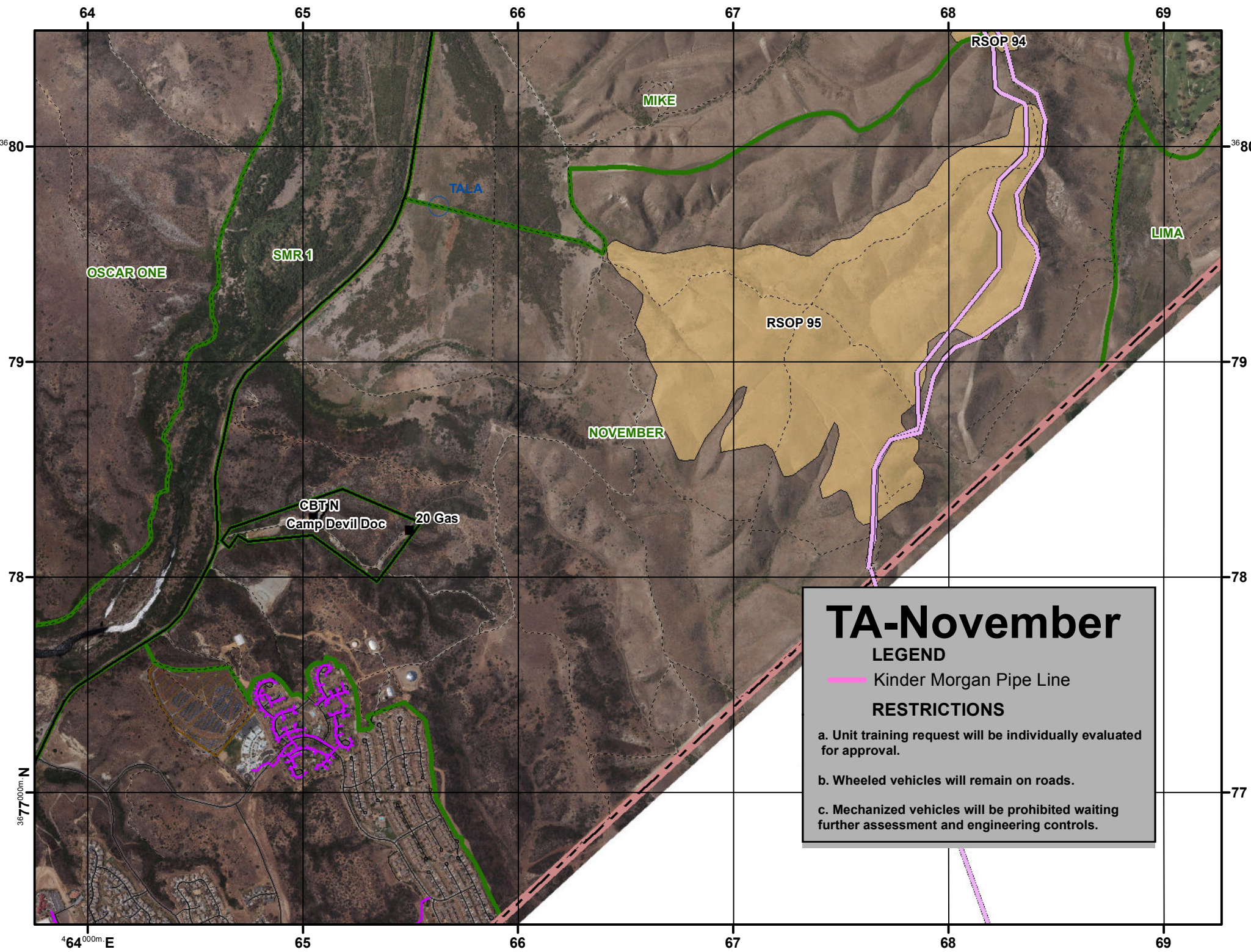
83 83 83

82 82 82

81 81 81


80 80 80

79 79 79



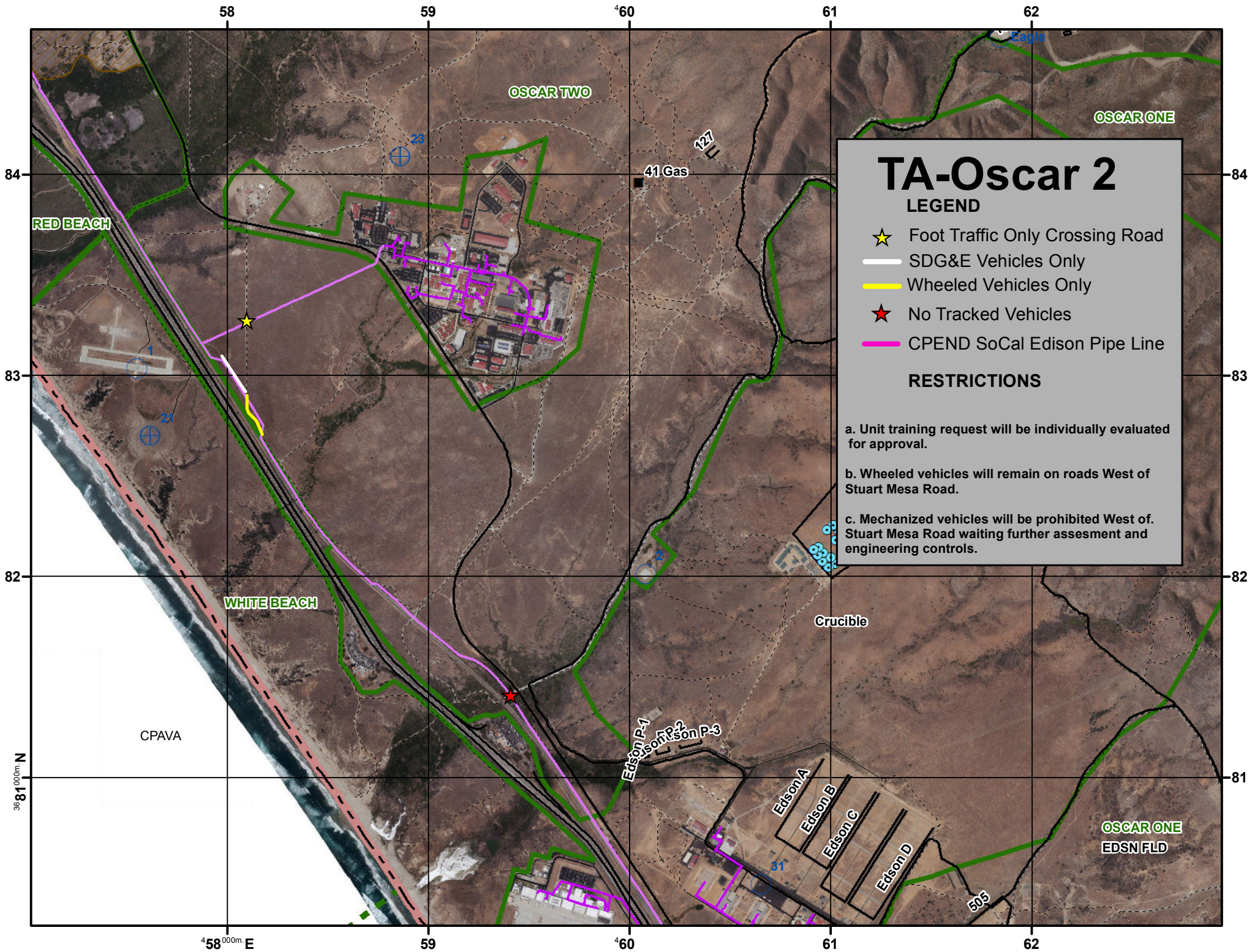
TA-November

LEGEND

-  Kinder Morgan Pipe Line

RESTRICTIONS

- a. Unit training request will be individually evaluated for approval.
- b. Wheeled vehicles will remain on roads.
- c. Mechanized vehicles will be prohibited waiting further assessment and engineering controls.



TA-Oscar 2

LEGEND

- ★ Foot Traffic Only Crossing Road
- SDG&E Vehicles Only
- Wheeled Vehicles Only
- ★ No Tracked Vehicles
- CPEND SoCal Edison Pipe Line

RESTRICTIONS

a. Unit training request will be individually evaluated for approval.

b. Wheeled vehicles will remain on roads West of Stuart Mesa Road.

c. Mechanized vehicles will be prohibited West of Stuart Mesa Road waiting further assesment and engineering controls.

364 000m. N

58^{000m} E

59

60

61

62

CPAVA

RED BEACH

WHITE BEACH

OSCAR TWO

OSCAR ONE

Crucible

Edson P-1
Edson P-2
Edson P-3

Edson A
Edson B
Edson C
Edson D

OSCAR ONE
EDSN FLD

41 Gas

505

127

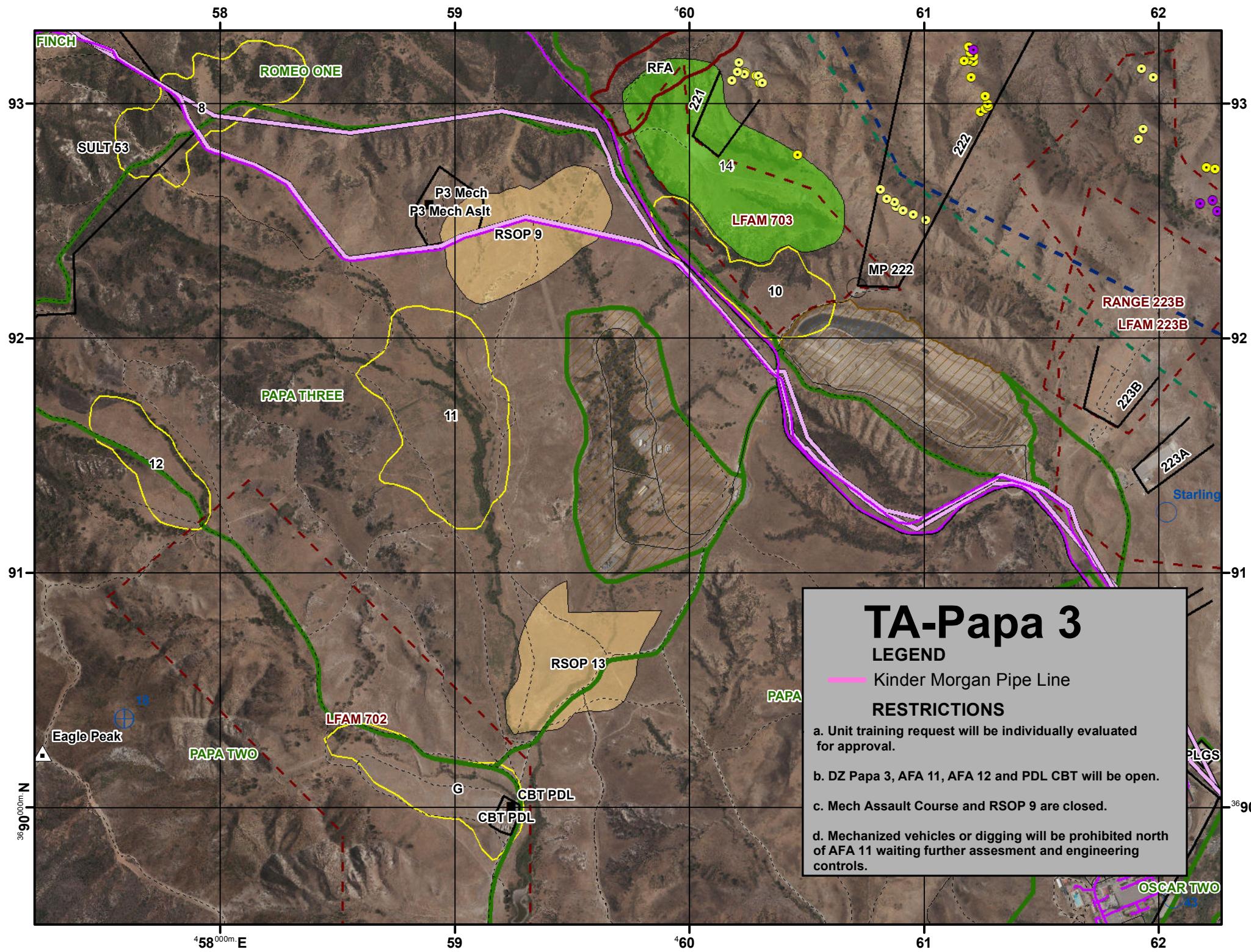
37

23

23

23

Eagle



TA-Papa 3

LEGEND

 Kinder Morgan Pipe Line

RESTRICTIONS

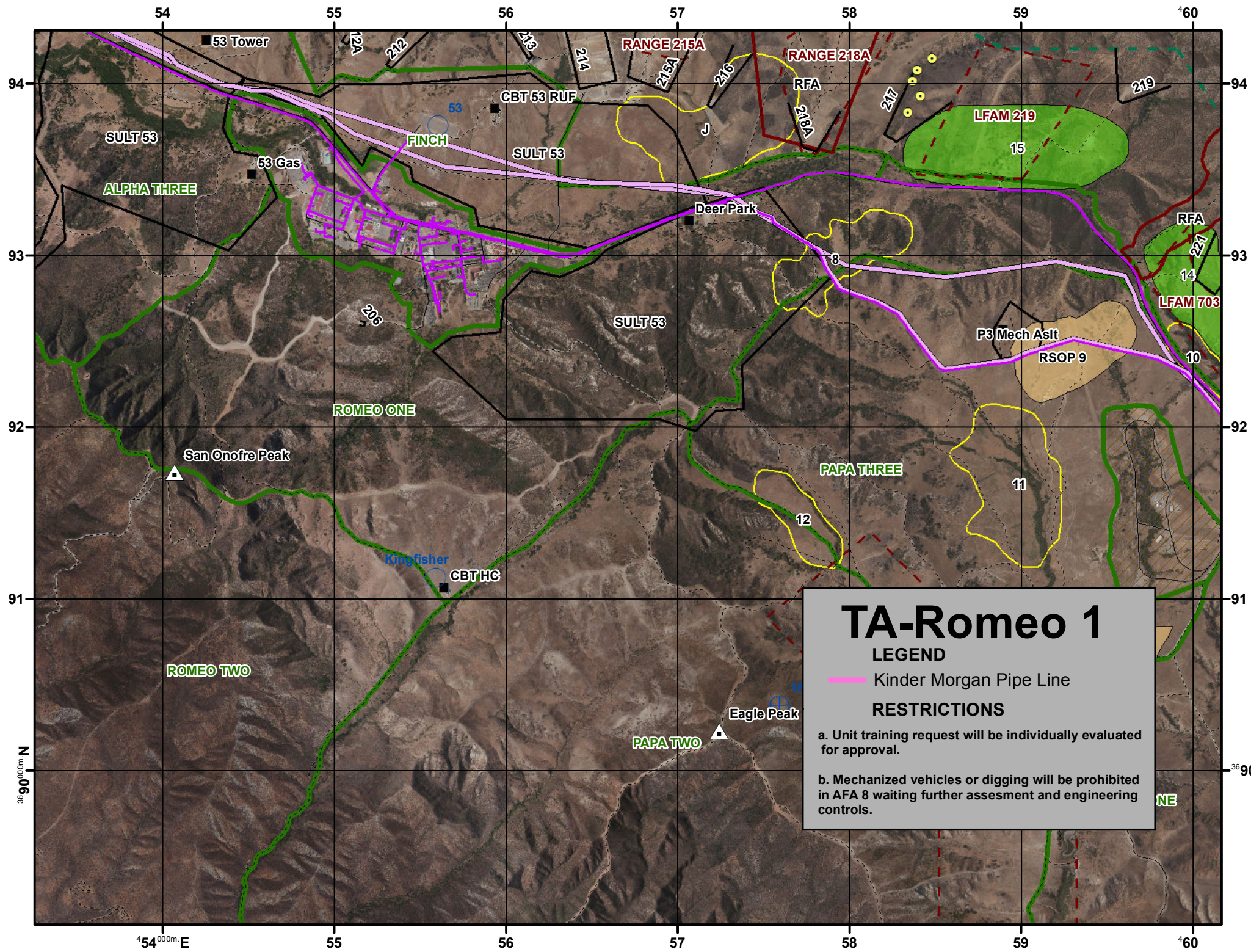
- a. Unit training request will be individually evaluated for approval.
- b. DZ Papa 3, AFA 11, AFA 12 and PDL CBT will be open.
- c. Mech Assault Course and RSOP 9 are closed.
- d. Mechanized vehicles or digging will be prohibited north of AFA 11 waiting further assesment and engineering controls.

36° 00' 00" N

48° 00' 00" E

36° 00' 00" N

62° 00' 00" E



TA-Romeo 1

LEGEND

- Kinder Morgan Pipe Line

RESTRICTIONS

- Unit training request will be individually evaluated for approval.
- Mechanized vehicles or digging will be prohibited in AFA 8 waiting further assesment and engineering controls.

54 55 56 57 58 59 60

94 93 92 91 90

53 Tower

53 Gas

53

FINCH

CBT 53 RUF

SULT 53

Deer Park

RANGE 215A

RANGE 218A

RFA

217

219

LFAM 219

15

ALPHA THREE

206

SULT 53

P3 Mech Asst

RSOP 9

RFA

221

LFAM 703

14

10

ROMEO ONE

San Onofre Peak

Kingfisher

CBT HC

PAPA THREE

11

12

ROMEO TWO

Eagle Peak

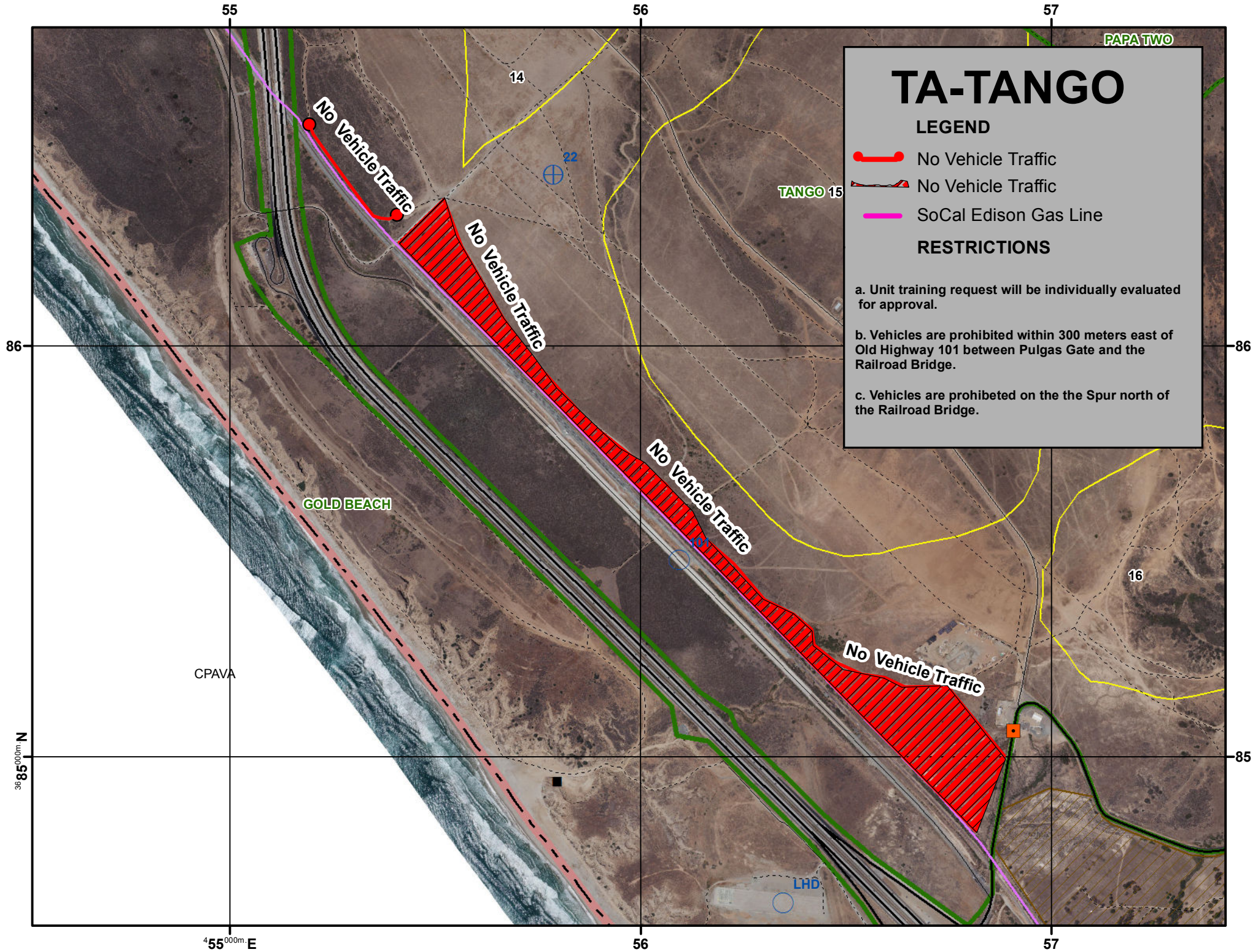
PAPA TWO

13

NE

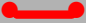
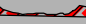

36° 00' 00" N

4° 54' 00" E



TA-TANGO

LEGEND

-  No Vehicle Traffic
-  No Vehicle Traffic
-  SoCal Edison Gas Line

RESTRICTIONS

- a. Unit training request will be individually evaluated for approval.
- b. Vehicles are prohibited within 300 meters east of Old Highway 101 between Pulgas Gate and the Railroad Bridge.
- c. Vehicles are prohibited on the the Spur north of the Railroad Bridge.