



Camp Pendleton Waterfowl Hunting 2020/2021



6 Boat Blinds



5 Portable blinds



15 Pallet blinds



Significant improvement this season to the duck hunting programs with regards to blinds, boats, equipment and available areas

Ver 2, 4 Dec 2020

J.C. Holt

Peer reviewed, ES approved

2017/2018 (end of drought)

60 ducks
555hr hunter effort

2018/2019

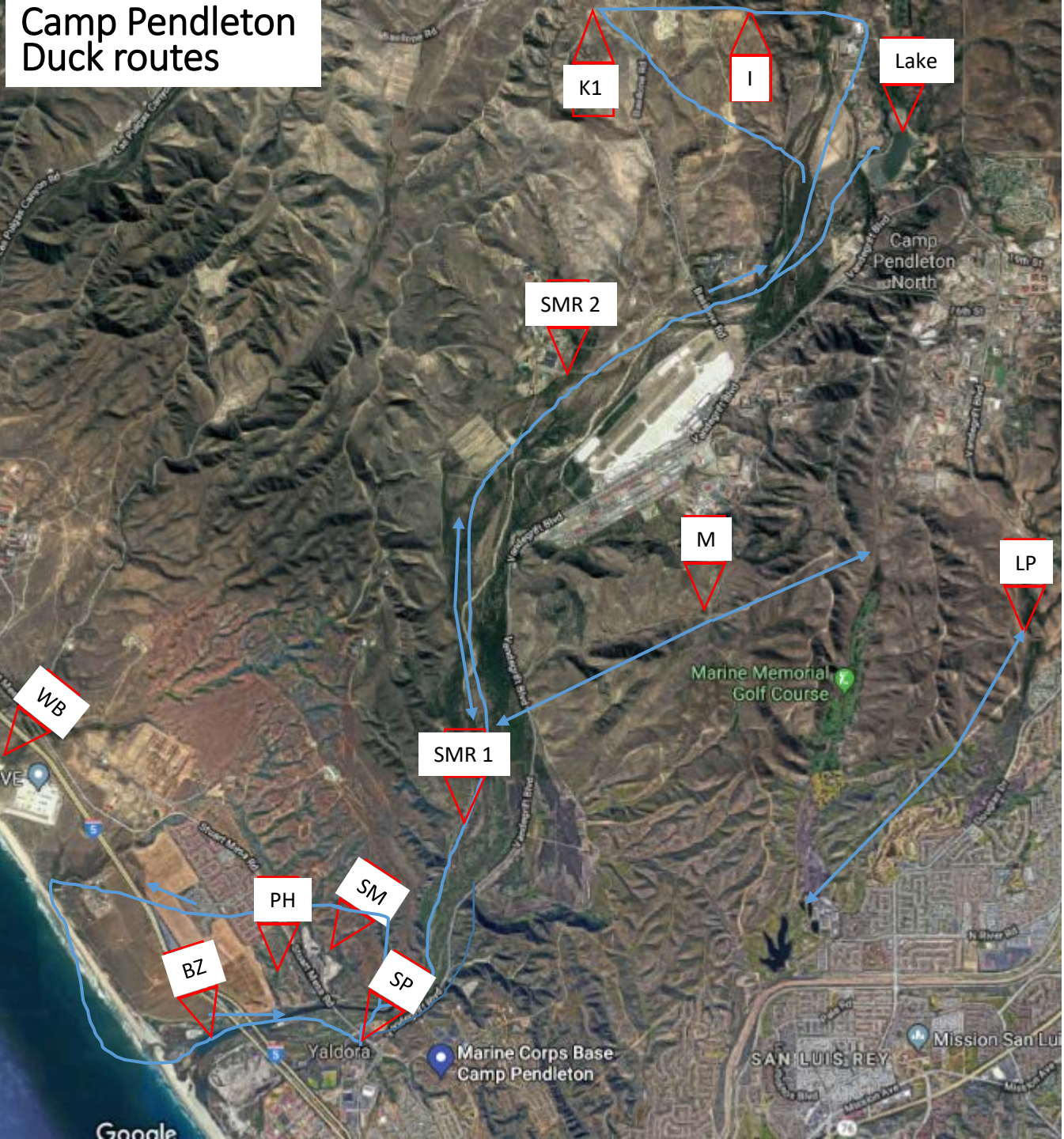
143 ducks/geese
196 hunter days effort

2019/2020

407 ducks/geese
316 hunter days effort

Legend from West to East

- WB: White beach
- BZ: Boat Zones
- PH: Pump House
- SM: Stuart Mesa
- SP: Sewage Pond (no hunt)
- SMR: Santa Margarita River
- K1: Kilo 1 pond
- M: Mike ponds
- I: India pond
- Lake: O'Neill lake (no hunt)
- LP: Lima ponds



Camp Pendleton Waterfowl Harvest as of: Jan 28, 2020

Area	Days Hunted	Mallard	Wigeon	Redhead	Cinn Teal	Blue Teal	Green Wing	Gadwall	Ruddy	Merganser	Ringneck	Coot	Shoveler	Scaup	Ross' Goose	Pintail	Bufflehead	Total	Ducks/day
BZ1	6	5	2					1									2	10	1.666667
BZ2	6										2							2	0.3333333
BZ3	3		1							1								2	0.6666667
BZ4	5							1				3						4	0.8
ENP	3																	0	0
ESP	2								2			1						3	1.5
HP	3	1	2								3							6	2
HR	5	14								3								17	3.4
IP	3	3							4									7	2.3333333
IR	3		1															1	0.3333333
K1P	5	4	1				1	1	3			2					1	13	2.6
K2P	3		3				1	1		3								8	2.6666667
LEP	7	10								1								11	1.5714286
LWP	8		4	2	2				2									10	1.25
MNP	3	5					1											6	2
MSP	0																	0	#DIV/0!
P1P	2								3									3	1.5
PHP	6											1						1	0.1666667
PP1	9	19	6			2	1	3	1		2	15				1		50	5.5555556
PP2	3	8	2				1	2			1							14	4.6666667
PP3	2	6	1															7	3.5
PP4	0																	0	#DIV/0!
PP5	2	1				1						1						3	1.5
RBL	0																	0	#DIV/0!
SM1	6	7	2	10	2		5	4	1									31	5.1666667
SM2	6	3	3		1		2	5					1	1				16	2.6666667
SM3	6		5		3	2	2	5	2				1					20	3.3333333
SM4	6	1	5	1	3	3		4										17	2.8333333
SM5	6	6	2		5	2		14										29	4.8333333
SM6	6	2	4		6			5	1									18	3
SMR1	7	8					1	2		1		1						13	1.8571429
SMR2	10	18	6				1	2				21						48	4.8
WBN	4		1						3			3	1					8	2
WBS	5	3	13		3	1	2	8	4				2	3	1		2	42	8.4
Total	151	124	64		25	11	18	58	26	9	8	48	5	4	1	1	5	407	2.6953642

The Rules

WATERFOWL SEASON is 5 Dec 2020 – 14 Feb 2021

These rules are in addition to the 2019-20 General Hunting Rules and offer waterfowl specific information. These rules augment and do not replace relevant California Fish and Game Code.

Waterfowl Stamps and Validations: Camp Pendleton is located in the Southern California Waterfowl Zone. Hunters are required to carry their California Hunting License, California Duck Validation, Federal Duck Stamp, and Harvest Information Program (HIP) Validation while hunting. Hunters 16 and older must have the both the Federal Duck Stamp and California Duck Validation.

Weapons and Ammunition: Shotguns and ammo must adhere to all relevant State and Federal regulations. Hunters may not use burst, automatic, or muzzle-loading shotguns.

Hunters with Physical Limitations: The Camp Pendleton Game Warden's office will attempt to accommodate individuals with specific requests, such as reserving a hunting area with a pond that is easily accessible. The Game Wardens can assist hunters with amputations or other mobility limitations with an appropriate reserved area through prior coordination. The hunter is responsible for recovering waterfowl, perhaps with a hunter helper. Game Warden personnel will not retrieve waterfowl for you.

Area Assignments: Areas are reserved through iSportsman (<https://pendleton.isportsman.net>). Obtain a free lottery entry permit between Mon-Wed prior to the weekend. Lottery results will be emailed the Thursday prior to the weekend. Lottery winners should obtain lottery winner permit on iSportsman. Lottery winners can pick a blind beginning at 0800 the day before their hunt day. At this time they can enter up to two guests in their reservation. These guests can be hunters or non-hunters. Non-winners can check out to unreserved areas beginning at 0500 on the day of the hunt. Non-winners can add up to two guests, either hunters or non-hunters. Reserved areas not claimed become available at 0600 on the day of the hunt.

Hunter Helpers: Waterfowl hunters may bring additional non-hunters on their hunt to assist with spotting, identifying, calling, and retrieval of waterfowl. "Hunter helpers" cannot hold any weapons. Hunter helpers do not need a hunting license or permit, but must otherwise be eligible to participate in the Camp Pendleton hunting program. Hunter helpers will remain in the blinds with the hunter. The use of hunting dogs is permitted in all hunting areas.

Hunting Areas: Only 1 party will be allowed to hunt in each pond, lake, blind, or lagoon.

Boat Zones: Santa Margarita River (SMR) Estuary Boat Zones 1-6

Established Blinds: SMR Weir Blind, SMR River Blind, Hotel Beaver Dam Blind, SMR2 Percolation Ponds (1-6), Oscar 1/Stuart Mesa Blinds 1-7, White Beach North Blind, White Beach South Blind 1-3, Echo Pond North Blind and South Boat Blind, Kilo 1 Pond, Lima West Pond Blind, Lima East Pond Blind and Boat Blind, Mike North Pond Blind, Papa 1 Pond Boat Blind, Pump House Pond Blind

No Established Blinds at ponds/lagoons: Hotel Pond, India Pond, Kilo 2 Pond, Mike South Pond, Red Beach Lagoon (RBL), Santa Margarita River Drainage (jump hunting): Hotel river (HR), India river (IR), (SMR1), (SMR2)

Report Unauthorized/Unethical Hunting: Contact the Game Warden office if you see illegal, unsafe, or unethical hunting practices. The Game Warden's office responds quickly to these instances. Camp Pendleton's hunting program is dependent on hunters making safe, ethical, and legal choices. Please help the Game Wardens ensure hunting will continue for years to come by reporting unsafe, unethical, or illegal hunting.

The Rules

Boats: Boats are authorized for use in ponds to retrieve waterfowl and for use in designated Boat Zones. Each boat must have oars or a small electric motor, flashlight, and life vests for each individual.

Blinds: Do not construct additional permanent blinds. Do not trim vegetation at the blinds. Don't litter. Check-in and Check-out Procedures: Use iSportsman to check in/out of areas.

First shot is ½ hour before sunrise, last shot is at sunset. To avoid ruining another hunter's opportunity, do not enter blinds from one hour before sunrise to 1000. Here is the hunting day schedule:

0500 Check in begins; don't enter the training areas before this time

0600 Unclaimed reserved areas become available. Do not enter the O-1/Stuart Mesa blinds, the SMR2/Perc pond blinds, the White Beach South blinds, the SMR Boat Zone blinds between 0600-0900 as this negatively affects others in the blinds.

1500 Last opportunity to check out to a duck hunting areas on iSportsman. 30 min after sunset Last hunter checks out from the field. If you need more time due to travel through the training area, contact the Game Wardens. Failure to check out will result in a 2 week suspension.

Environmental Regulations: The Santa Margarita River (SMR) Estuary is a protected wetland ecosystem. All boats to be used in the SMR Estuary must be launched and loaded from the dirt road directly beneath Interstate 5. Foot traffic is prohibited anywhere within the SMR Estuary. Cutting and/or removal of vegetation is prohibited in all hunting areas.

Displaying of Vehicle Pass: Each hunter checked out to an area must place their vehicle pass on the dashboard of their hunting vehicle. Multiple hunters carpooling will place multiple passes on the dashboard.

Safety: Hunter orange is not required for duck hunting, in general. Some limited exceptions may occur when co-use of areas occurs. Hunters would be notified through iSportsman. Hunters may not shoot toward roads, behind blinds, over other boats, or over other hunters. Hunting is prohibited within 150 yards of Interstate-5 and 500 yards of Del Mar Recreational Beach. All individuals in a boat must wear a life vest.

Non-Waterfowl Hunting: A hunter may only hunt waterfowl while checked out for waterfowl hunting. **Ethical Shots:** Only take shots that you can make based on your experience at the range. Do not take shots beyond your skill level or what the conditions allow. "Sky blasting" at 50+ yards significantly increases chances of crippling animals. Hunters caught "sky blasting" will be suspended. Be sure of the species you intend to take and mindful of your limits.

After the Harvest: Report harvest through iSportsman. The hunter may utilize the skinning rack area, but do not rely on Game Warden personnel to assist cleaning your waterfowl. Discard animal parts in the "gut cans"; do not throw regular trash in the "gut cans". Clean up after yourself. **Over-Harvest and Wrongful Take:** Do not shoot over the harvest limits or any species not authorized for take. If you do, bring it back to the office and forfeit the animal.

Boat Zone 1-3

2017/2018 (end of drought)

0 ducks
49 hr hunter effort

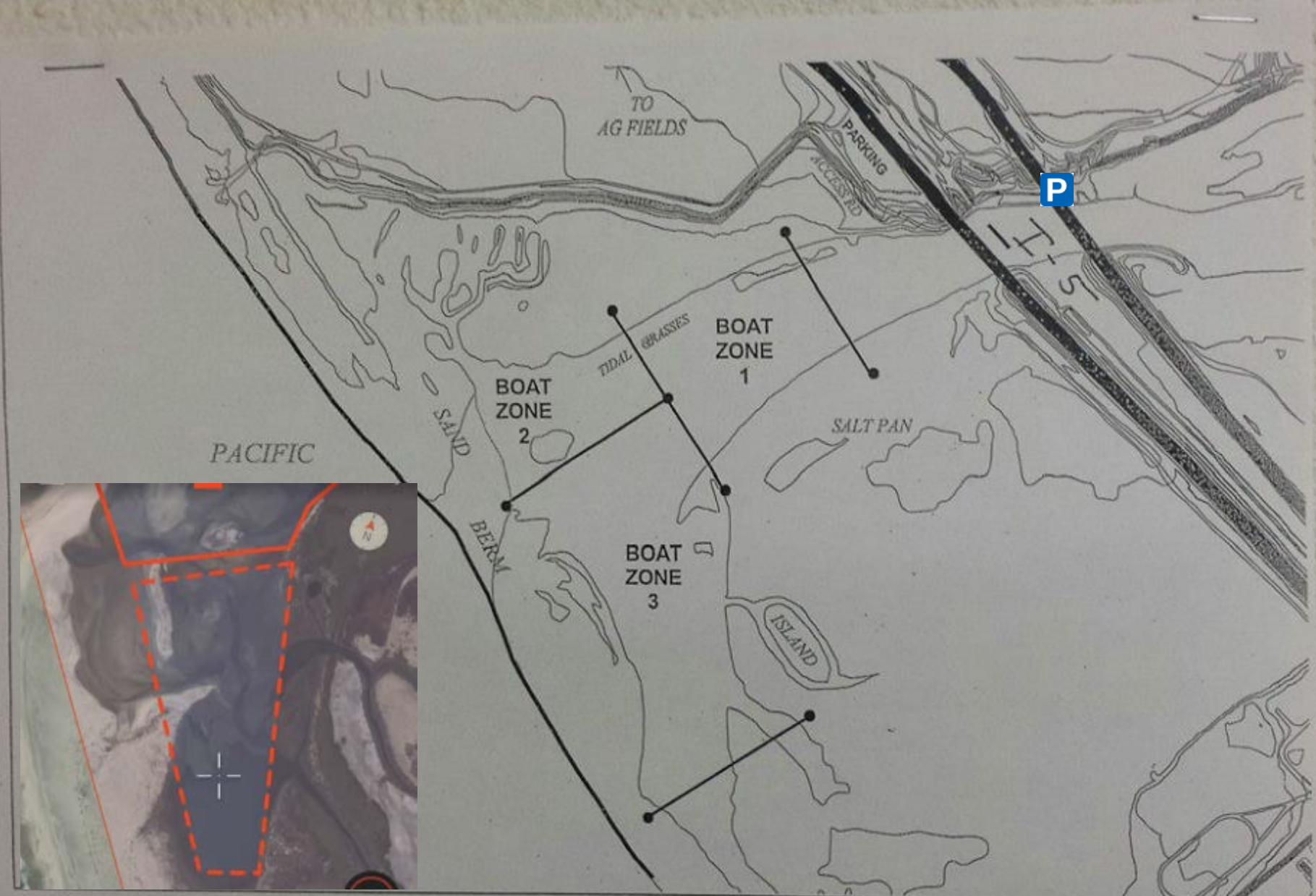
2018/2019

11 ducks/geese
18 hunter days effort

2019/2020

14 ducks/geese
15 hunter days effort

Boat only
Kayak layout blinds work
Put in below I-5 bridge
Anchored only
No shooting from shore
Limited natural cover
Boat zone 3 extended to
South for ducks in the
lagoon



PLEASE NOTE WHILE IN TRAINING AREAS
Check out to one area only and back in when finished.
Disturbance of natural/native habitat is prohibited.
Littering, alcoholic beverages and off roading is prohibited.
Park on bare earth only, 150ft from outbuildings, pumps, etc.
Two and three wheel vehicles; accessing jeep trails, fire breaks is prohibited.
Use of dogs for big game is prohibited.

SANTA MARGARITA RIVER ESTUARY (LOWER)

- | Zone Boundaries
- Base Boundary
- ~ 25 Foot Contours
- ~ 5 Foot Contours

Boat Zone 4

2017/2018 (end of drought)

11 ducks
119 hr hunter effort

2018/2019

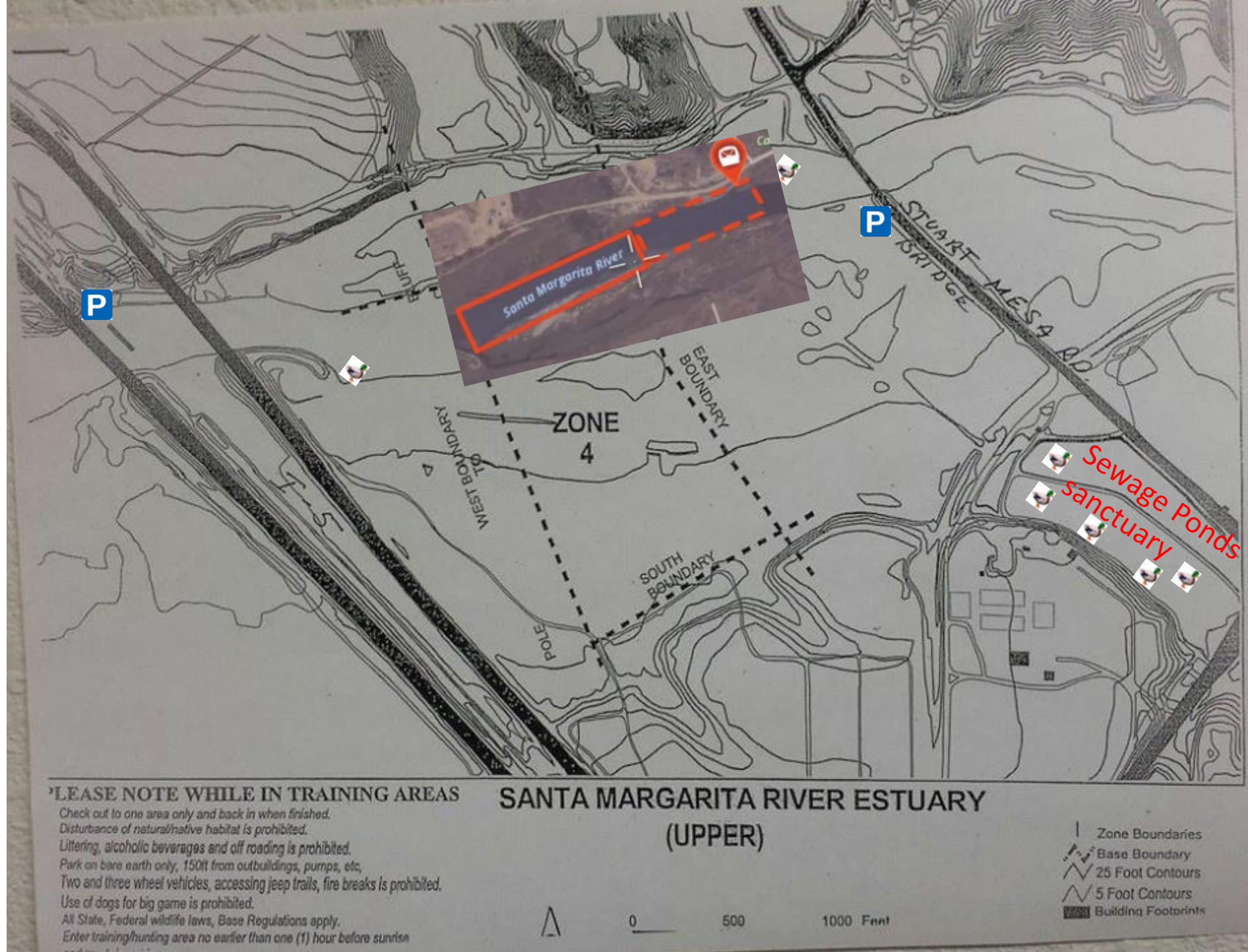
5 ducks/geese
8 hunter days effort

2019/2020

4 ducks/geese
5 hunter days effort

Extended zone to the East,
but maintain 200 meters
distance from Stuart Mesa
road. Good natural cover in
eddy on north side of the
river

Parking and portage by the
Stuart Mesa bridge south side
or under the I-5 bridge.
No shooting from shore.



Stuart Mesa Ponds Blinds

2017/2018 (end of drought)

0 ducks

49 hr hunter effort

2018/2019

62 ducks/geese

50 hunter days effort

2019/2020

131 ducks/geese

36 hunter days effort



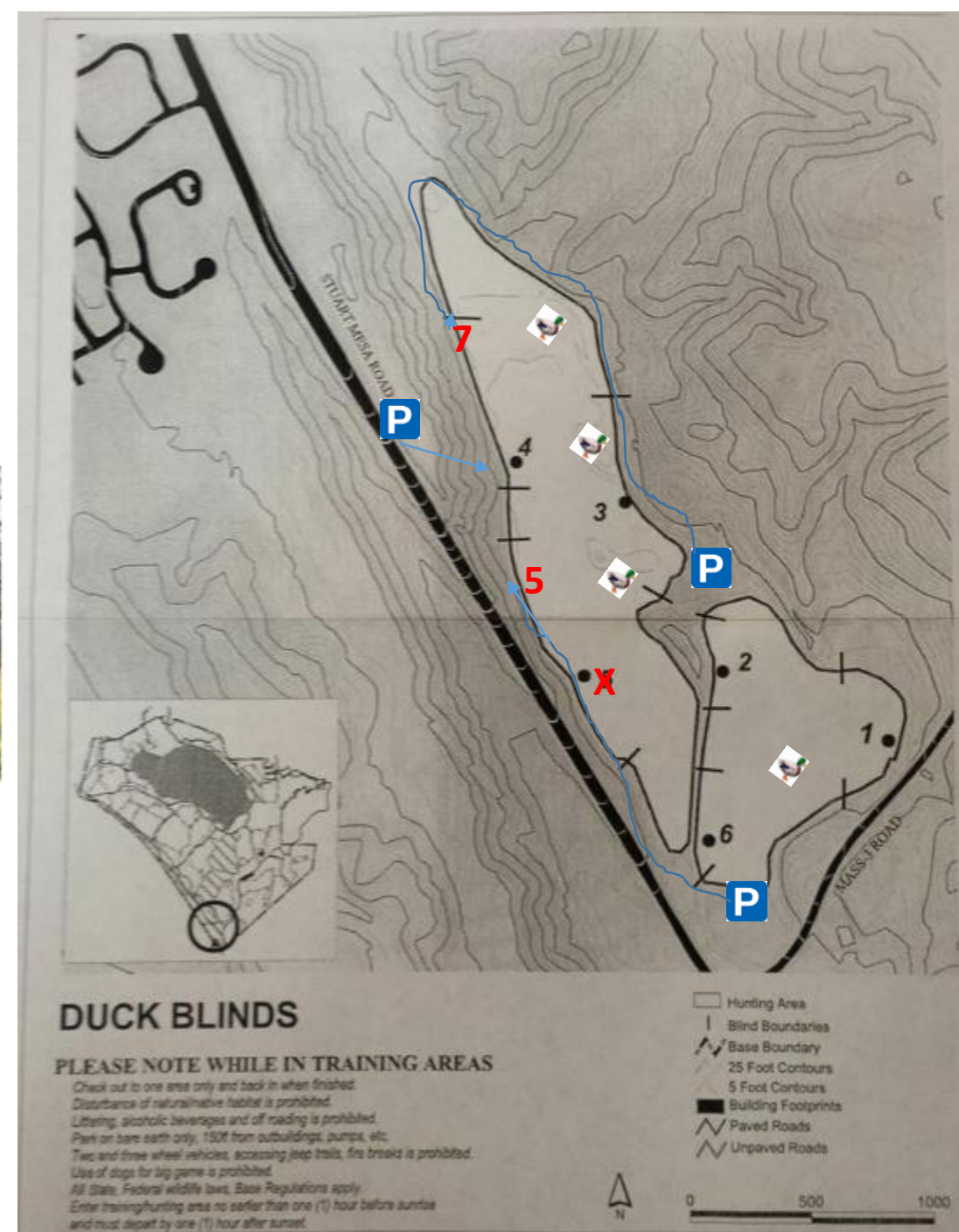
Our best area

Replaced three blinds, repaired one.

Access across water, down the hill or around pond.

Mallards and Pintails arrive late in season.

Has water from last year and resident ducks.



Pump House Pond

2017/2018 (end of drought)

0 ducks

49 hr hunter effort

2018/2019

? ducks/geese

? hunter days effort

2019/2020

1 ducks/geese

6 hunter days effort



Built blind and ramp, launched boat.
Removed, demo and throw away old sunken
boat. Pump house pond is deep and muddy.
Dog or boat retrieval. Teal, mallards,
canvasback.



White Beach (French and Aliso creeks)

2017/2018 (end of drought)

0 ducks

0 hr hunter effort

2018/2019

19 ducks/geese

21 hunter days effort

2019/2020

50 ducks/geese

9 hunter days effort



White Beach North (Aliso Creek):

Built Pallet Blind 1 on South side.

White Beach South (French Creek):

Improved road traffic ability

Built Pallet Blind 1 on North side

Built Portable Blind 2 on East side

Built Pallet Blind 3 on south side

Added more area to hunt near the beach.

Added boat on North for South blind



SMR 1

2017/2018 (end of drought)

27 ducks

115 hr hunter effort

2018/2019

11 ducks/geese

37 hunter days effort

2019/2020

13 ducks/geese

7 hunter days effort

Stealth required

Jump big ducks here: Mallard, teal, wigeon, Gadwall

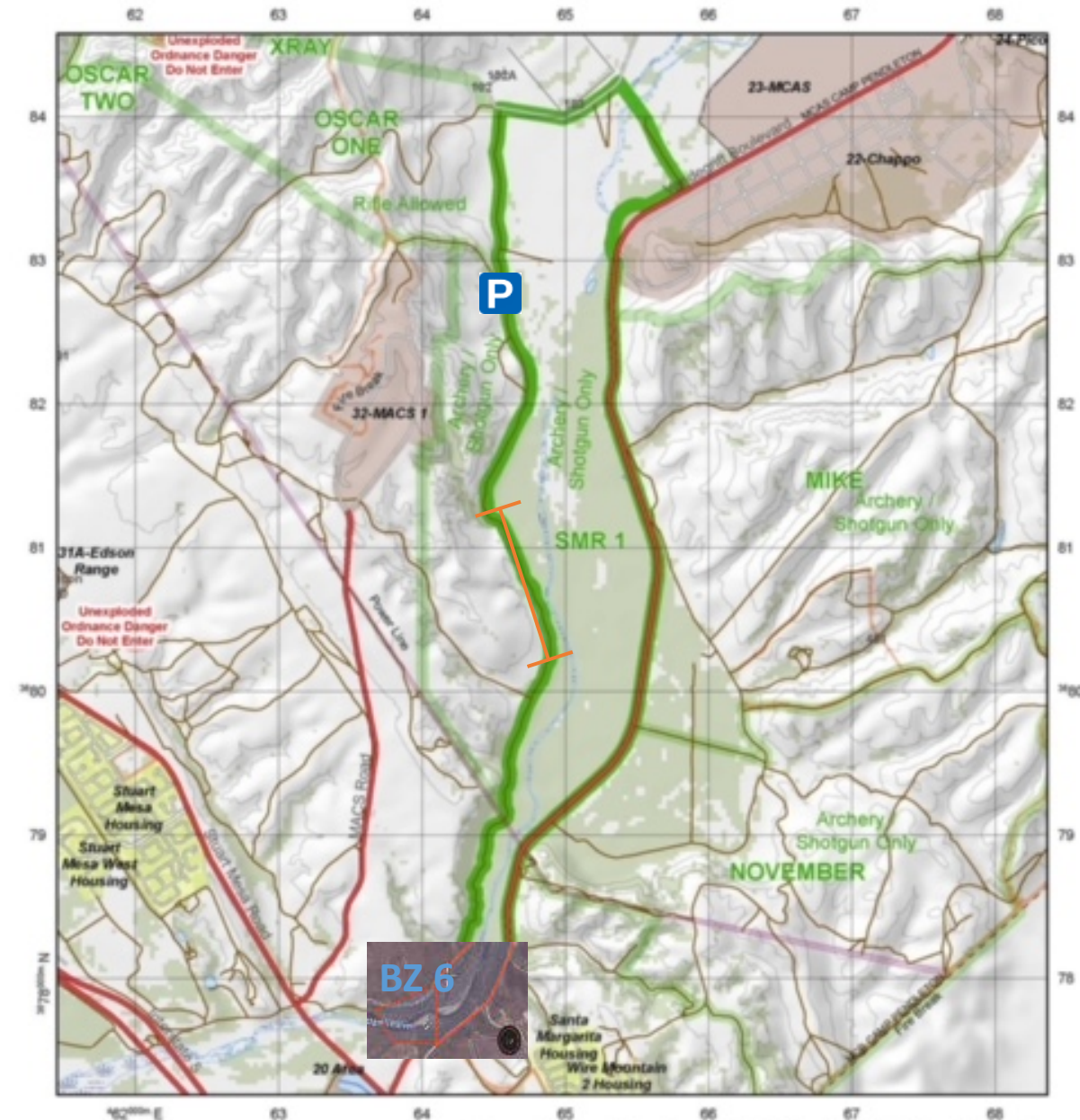
Long shots

Once busted ducks may not return

Good chance at real ducks without boat, decoys, dog

Attempted portable blind install not possible due to thick vegetation

Extended the southern boundary to 500m within Stuart Mesa road. Designated area as Boat Zone 6



SMR 1



From Game Warden office, turn right onto Vandegriff Blvd. and drive 7.8 miles to Stuart Mesa Rd turn right. Go 0.6 miles over bridge and turn at 1st right. Turn right again in 30 yards. SMR-1 on right. See map for boundaries.

Rules: Check in and out to one area only as authorized. Protect habitat. No littering, alcohol, off-road driving, quads, ATVs, or motorcycles. Park on bare ground, 50 yards from structures. No shooting within 150 yards of

SMR 2

2017/2018 (end of drought)

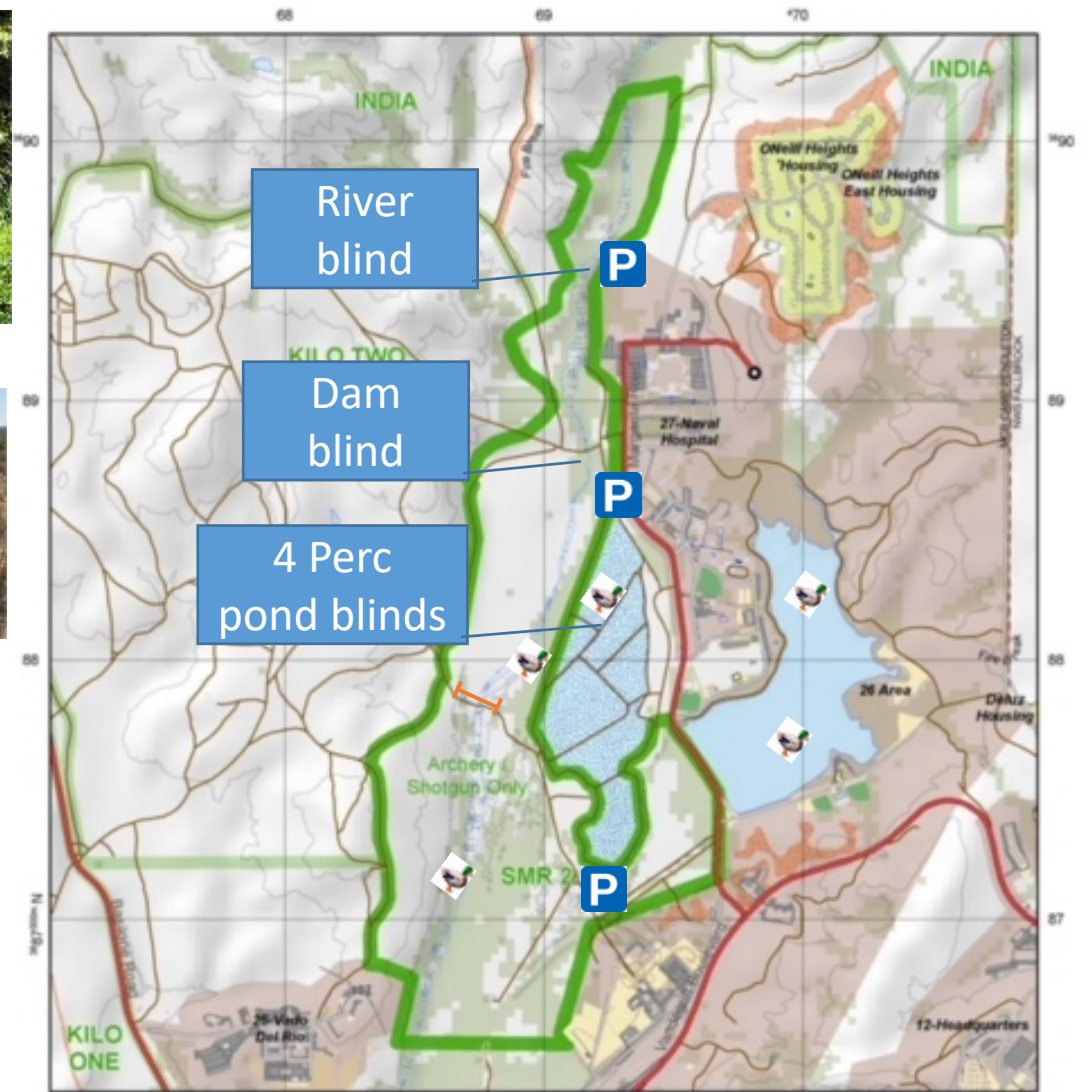
16 ducks
115 hr hunter effort

2018/2019

24 ducks/geese
34 hunter days effort

2019/2020

13 ducks/geese
10 hunter days effort



Stealth required along river
Jump big ducks and occasional geese
along river
Long shots
Pass shooting

SMR 2



From Game Warden Office, go out the gate to stop sign, turn left and go to next stop sign, turn left onto Santa Margarita Rd. Go 0.8 miles. Turn left on first dirt road across from the Fitness Center. Enter SMR-2. See map for boundaries.

Rules: Check in and out to one area only as authorized. Protect habitat. No littering, alcohol, off-road driving, quads, ATVs, or motorcycles. Park on bare ground, 50 yards from structures. No shooting within 150 yards of roads or buildings.

Perc Ponds

2017/2018 (SMR2&Perc Ponds)

16 ducks

115 hr hunter effort

2018/2019 (SMR2 & perc ponds)

24 ducks/geese

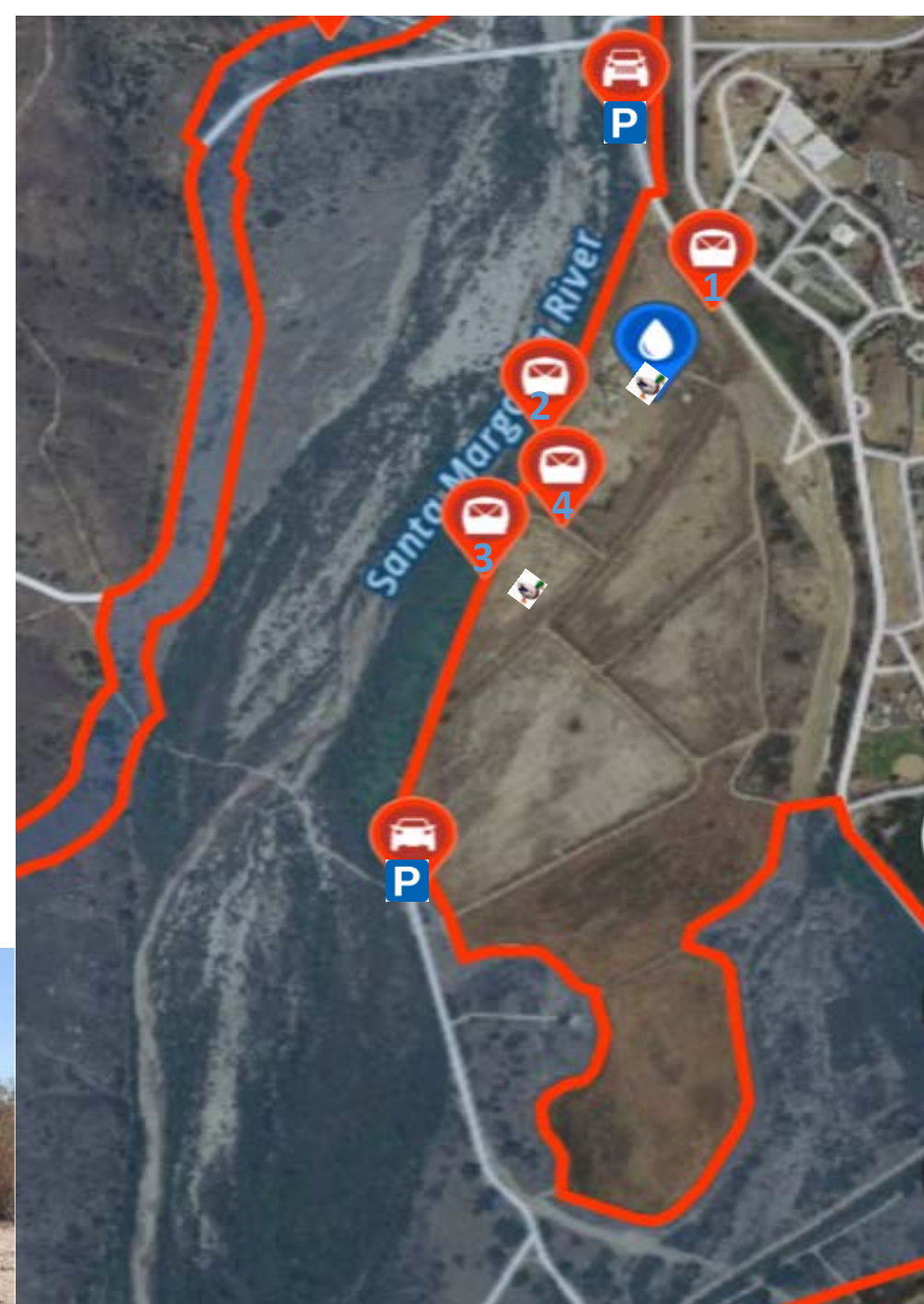
34 hunter days effort

2019/2020 (Perc Ponds)

64 ducks/geese

16 hunter days effort

PP Blind 1: Rebuilt entrance flooring
Built PP Pallet blind 2 on west side of north pond.
Improved PP blind 3 on west side
Built SMR2 River Pallet blind
Built pallet blind south of dam
Built PP portable blind 4
Demo 3 old blinds in dry ponds.



India River and Pond

2017/2018 (end of drought)

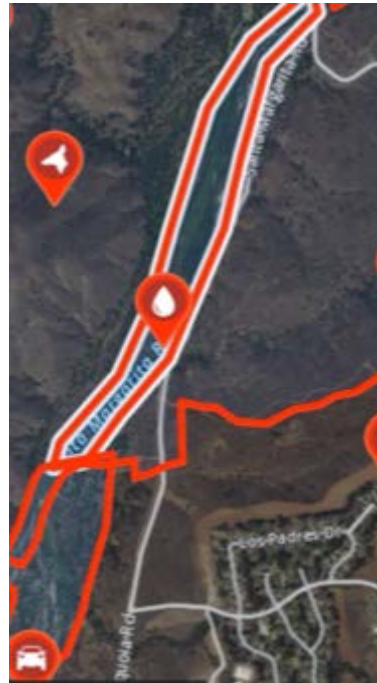
2 ducks
8 hr hunter effort

2018/2019

0 ducks/geese
0 hunter days effort

2019/2020

8 ducks/geese
6 hunter days effort

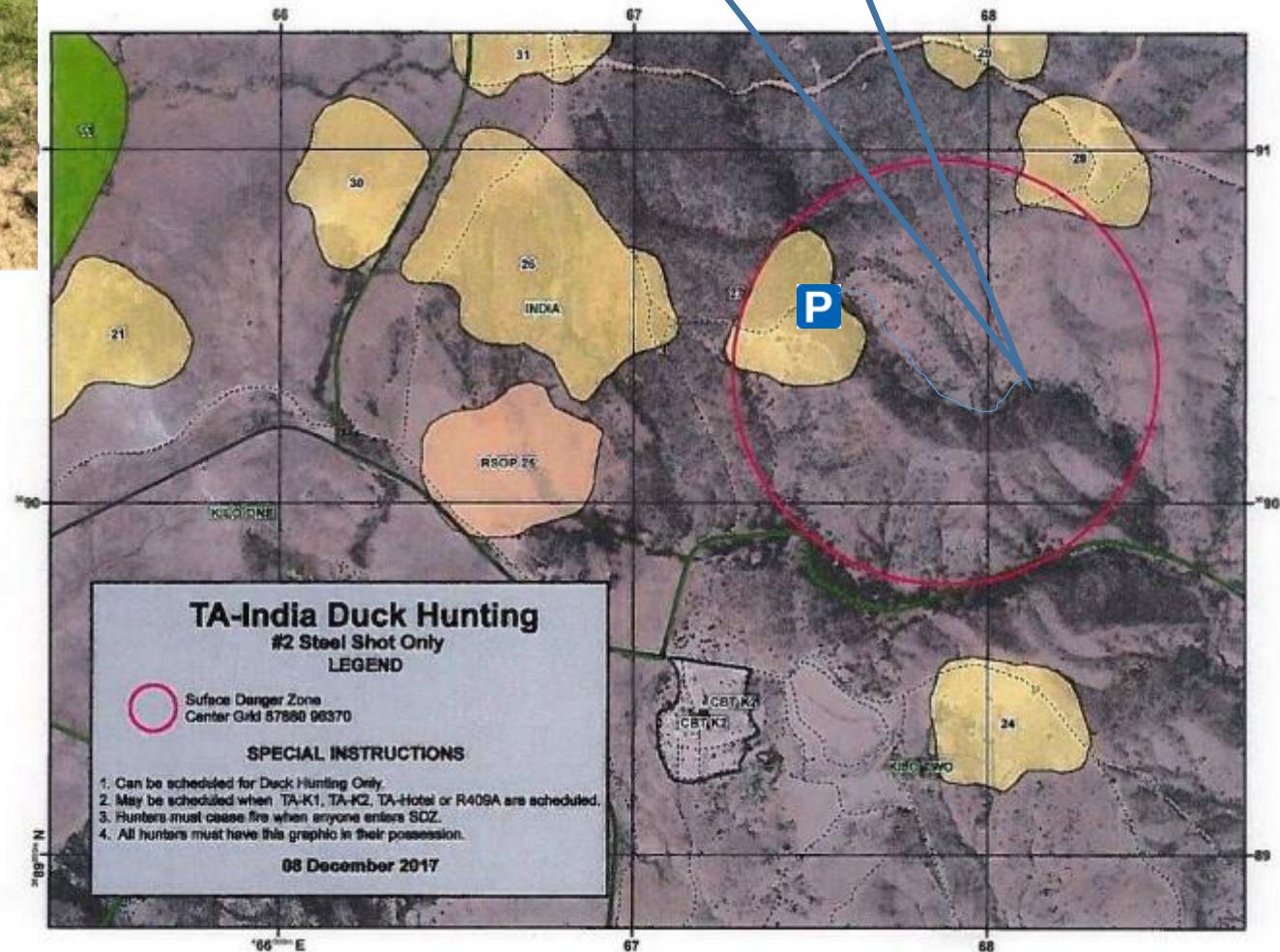
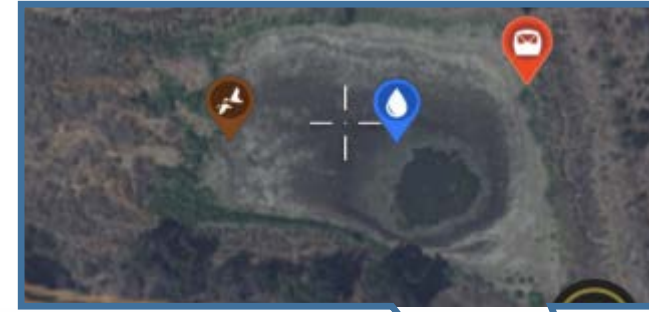


Once busted, ducks not likely to return

Park AFA27, 500m walk in creek to pond.

Built a portable blind in the north east corner.

India's SMR river gets ducks too!



K1 Pond

2017/2018 (end of drought)

4 ducks

48 hr hunter effort

2018/2019

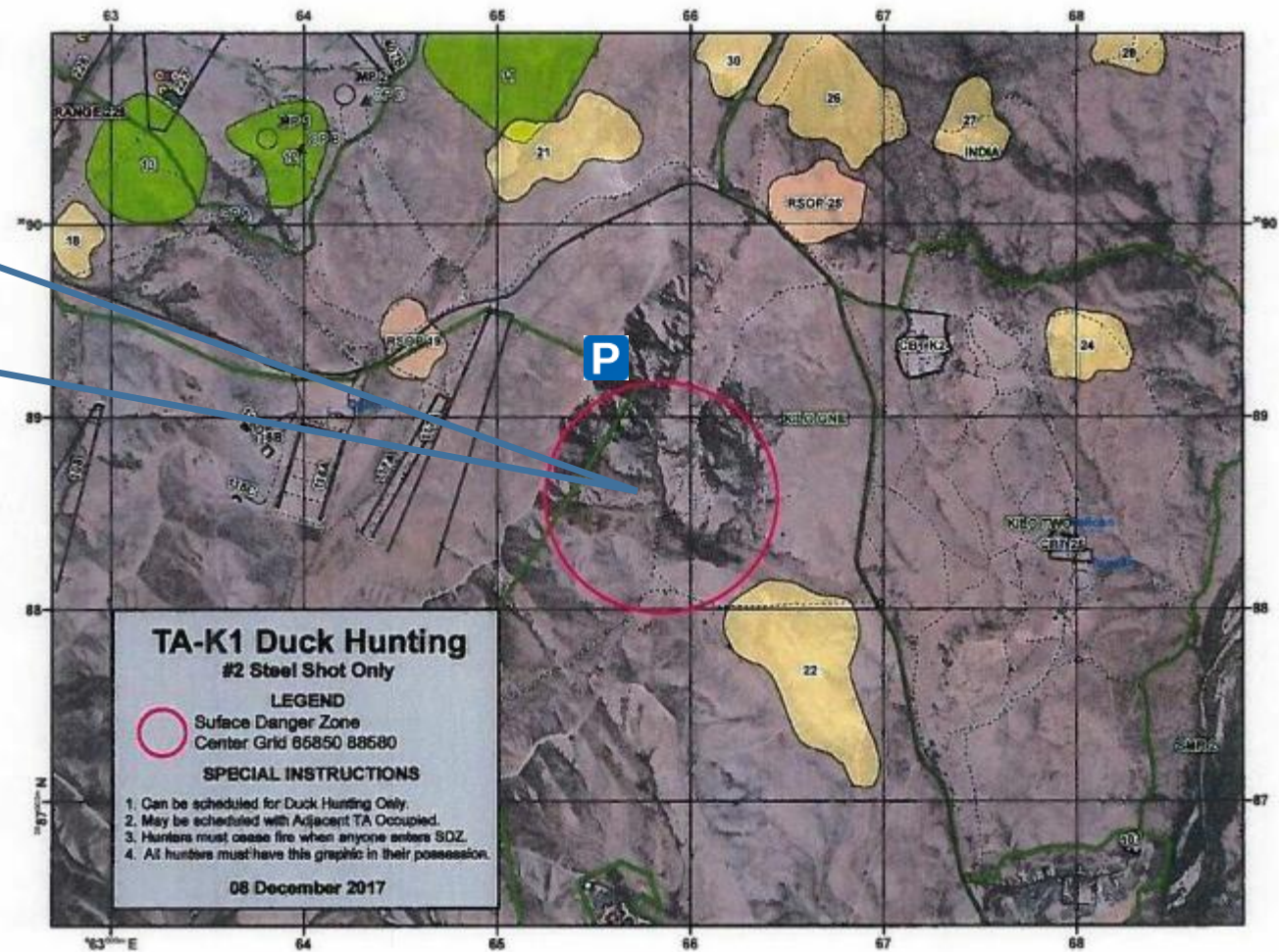
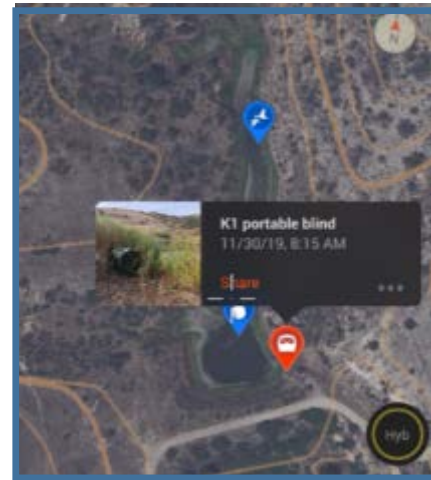
3 ducks/geese

8 hunter days effort

2019/2020

13 ducks/geese

5 hunter days effort



Park 500m at top of the hill south west. Walk to east side of dam for installed two-person portable blind. Soft bottom. Gets deep. Dog or throw retrieve recommended. Coots and Ruddy

Lima Ponds

2017/2018 (end of drought)

0 ducks

0 hr hunter effort

2018/2019

20 ducks/geese

21 hunter days effort

2019/2020

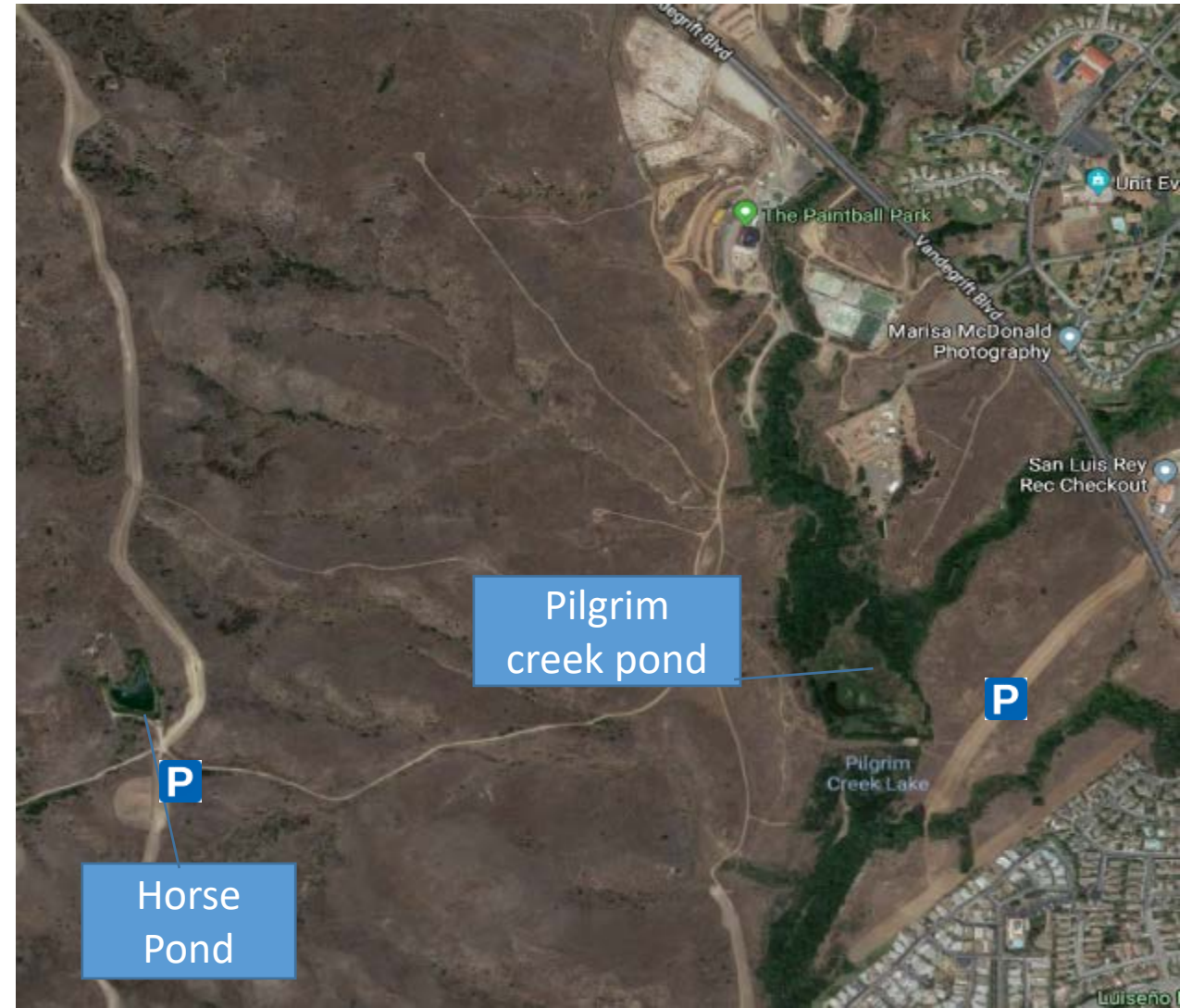
21 ducks/geese

15 hunter days effort

Pilgrim Creek Pond becomes deep with water accumulation and requires a boat or dog for retrieval. Filled with quality ducks that bed down, with departure and returns around legal shooting times. Lima East (Pilgrim Creek Pond). Dam blind.

boat blind near dam.

Lima West (Horse Pond) boat blind



Mike Ponds

2017/2018 (end of drought)

0 ducks

33 hr hunter effort

2018/2019

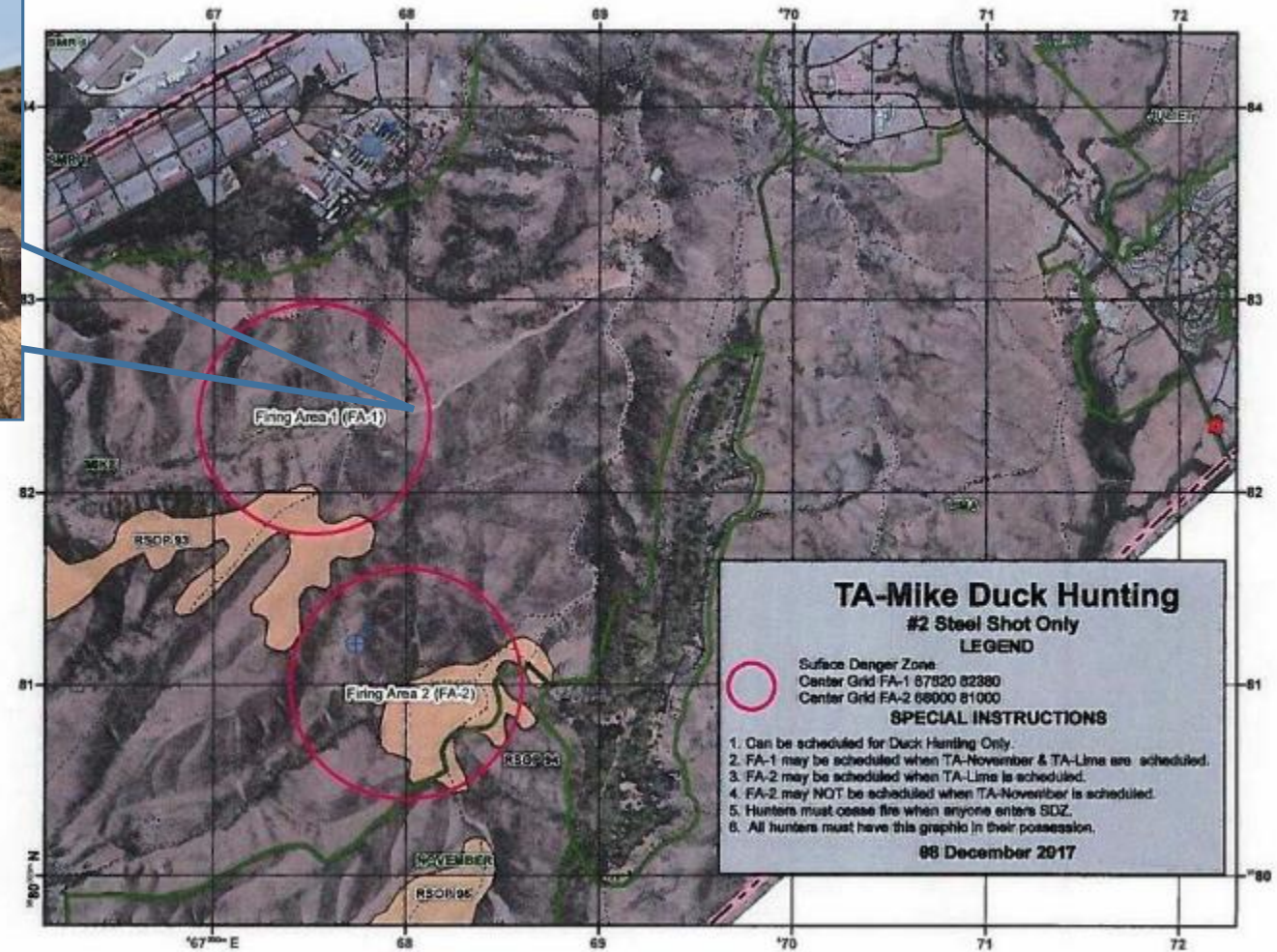
0 ducks/geese

0 hunter days effort

2019/2020

6 ducks/geese

3 hunter days effort



It takes significant accumulation to flood Ysidora basin. Mike ponds have received ducks and geese in the past. Built a pallet blind on North pond.

Papa 1 Pond (Las Pulgas)

2017/2018 (end of drought)

0 ducks

0 hr hunter effort

2018/2019

0 ducks/geese

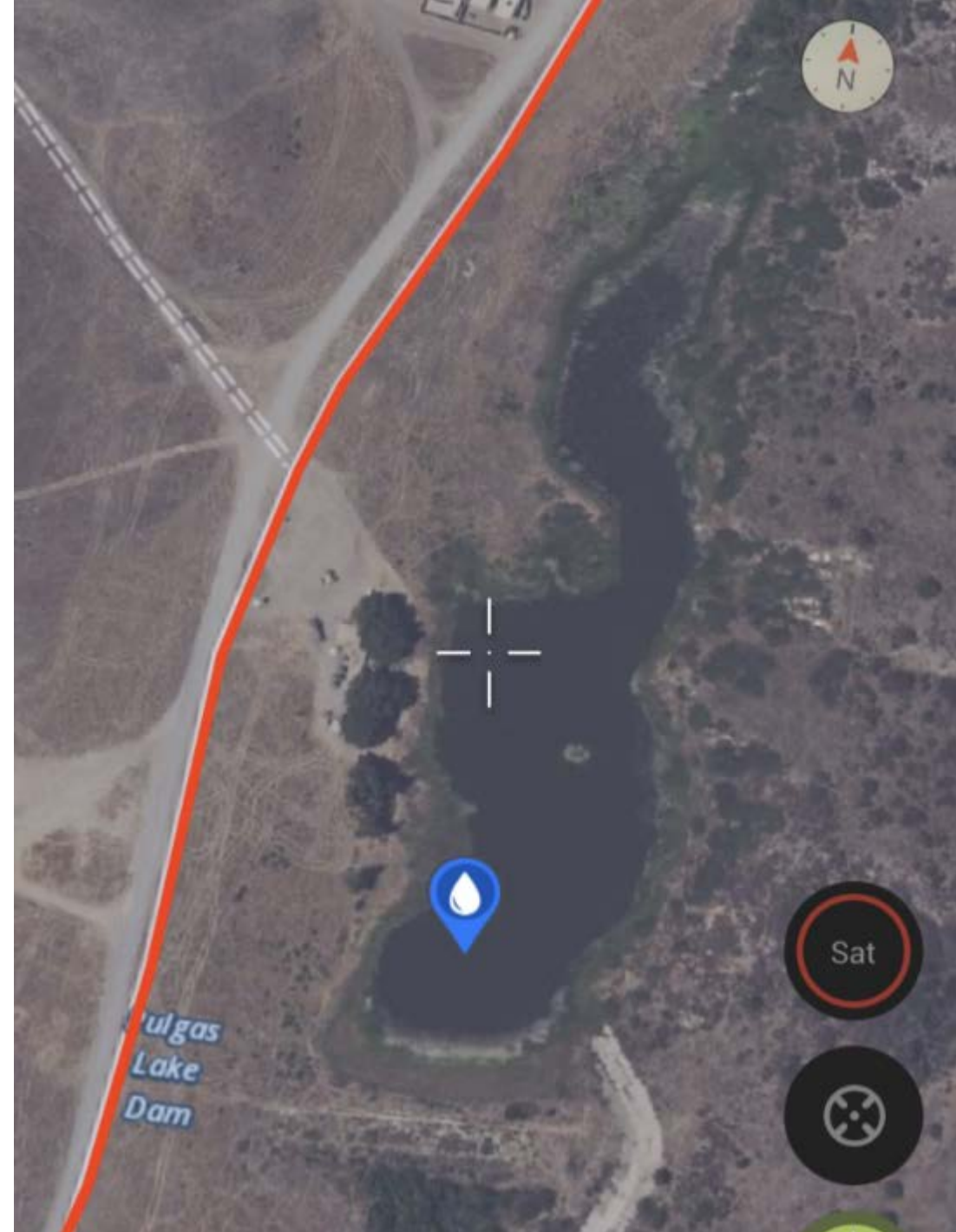
0 hunter days effort

2019/2020

3 ducks/geese

2 hunter days effort

Las Pulgas pond is deep due to water accumulation and requires a boat or dog for retrieval. Not much hunting history. Requires more study. Added boat blind for fishing and hunting recreation.



Hotel river and pond

2017/2018 (end of drought)

0 ducks
33 hr hunter effort

2018/2019

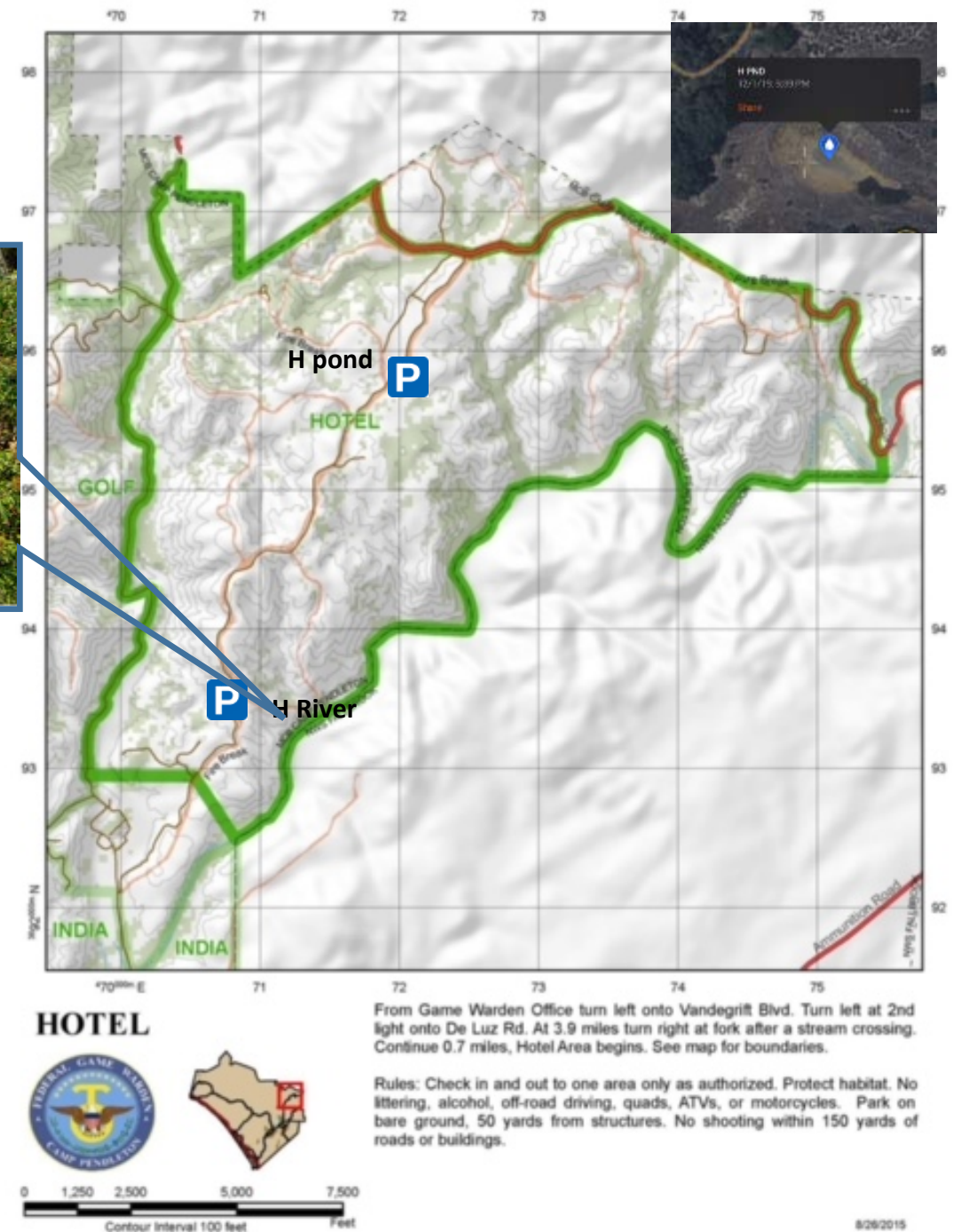
0 ducks/geese
0 hunter days effort

2019/2020

23 ducks/geese
8 hunter days effort



The Hotel pond is Vernal pool at 71466 95815. To access Hotel pond park at AFA 39 and walk in. No blind on pond due to lack of consistent habitat. Added Hotel "River" to the maps. Consistent water and ducks spread throughout northern portion of river. Portable blind near beaver dam in river.



Echo ponds (Case Springs)

2017/2018 (end of drought)

4 ducks
48 hr hunter effort

2018/2019

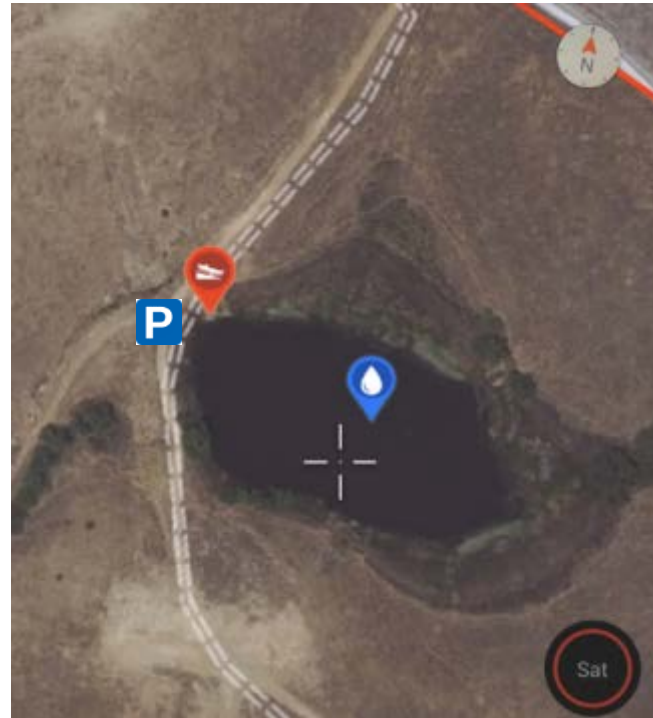
? ducks/geese
? hunter days effort

2019/2020

3 ducks/geese
5 hunter days effort

Case Springs pond South is deep due to water accumulation and requires a boat or dog for retrieval. Case Springs pond North is shallow within 30m of the blind

Echo Pond South (Case springs).



Echo Pond North (Case Springs Pond).

